



origin

DOORS AND WINDOWS

Inline Slider Specification File



A close-up photograph of a dark-colored door handle and keyhole. The handle is a vertical inline slider with a rectangular cutout. Below it is a circular keyhole with a silver-colored keyhole cover. The background is a light, slightly blurred wall. A white diagonal shape cuts across the bottom left of the page, containing the text.

Contents

Specification Overview	04
Security	06
Inline Slider Make-Up	07
Performance and Limitations	08
Master Configurations	09
Technical Drawings	14
Installation Guide	34
Notes	66

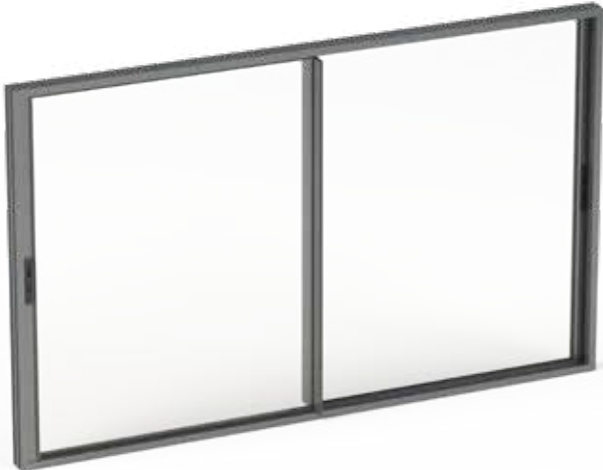
Specification Overview

Thermally Broken Aluminium Inline Slider

External view of the Origin Inline Slider



Internal view of the Origin Inline Slider



Profile specification

Frame Depth	2 options: 116mm (double track) and 182mm (triple track)
Sightline	20mm interlockers, 159mm central locking stiles (if used)
Track Height	44mm (double and triple track)
Maximum Individual Panel Size	2200mm wide x 3000mm tall* <i>*individual panels cannot exceed 6sqm</i> <i>*the height of an individual panel cannot exceed 3 times its width</i>
Minimum Individual Panel Size	550mm wide x 1600mm tall

Features

- ▶ Up to a 20-year guarantee including gaskets and seals*
- ▶ Up to a 10-year guarantee on glass*
- ▶ Ultra-slim 20mm sightlines
- ▶ Available in any RAL finish
- ▶ Concealed running gear and track
- ▶ Minimum of 6 points of locking (internal lever and cylinder only)
- ▶ Weather testing BS6375 part 1 certified
- ▶ Can accommodate large panel sizes

Options and extras

- ▶ Up to 6 paneled configurations - these can be all sliding or a combination of fixed and sliding
- ▶ All RAL colours available
- ▶ Lever options: 7015M, 7016M, 9005M, 9910G
- ▶ Drip bar available

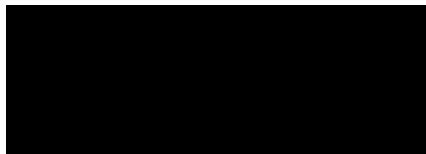
Glazing options

- ▶ Structurally bonded system
(Fixed panels will require bonding on site by the installer)
- ▶ The premium low-e toughened glass used is a dependable double glazed unit. Constructed of two toughened sheets - a minimum of 6mm on both the inward and outward facing panes, making it highly durable as well as thermally efficient.

The Origin Inline Slider is available in the following finishes...



Anthracite Grey (7016M)



Jet Black (9005M)

Origin's special RAL colours are available on an 8-week lead time

For the full range, visit origin-global.com

Dual colour and woodgrain options are not available.

*Guarantee based on location of where the doors will be installed.
Full terms and conditions can be found on the Origin website - origin-global.com/terms-and-conditions.

origin

Security

Origin's Multi-Point Lock

Each door is equipped with an ultra-secure multi-point locking system, which features a minimum of six points of locking. Depending on the size of the door, this may increase.



Lever

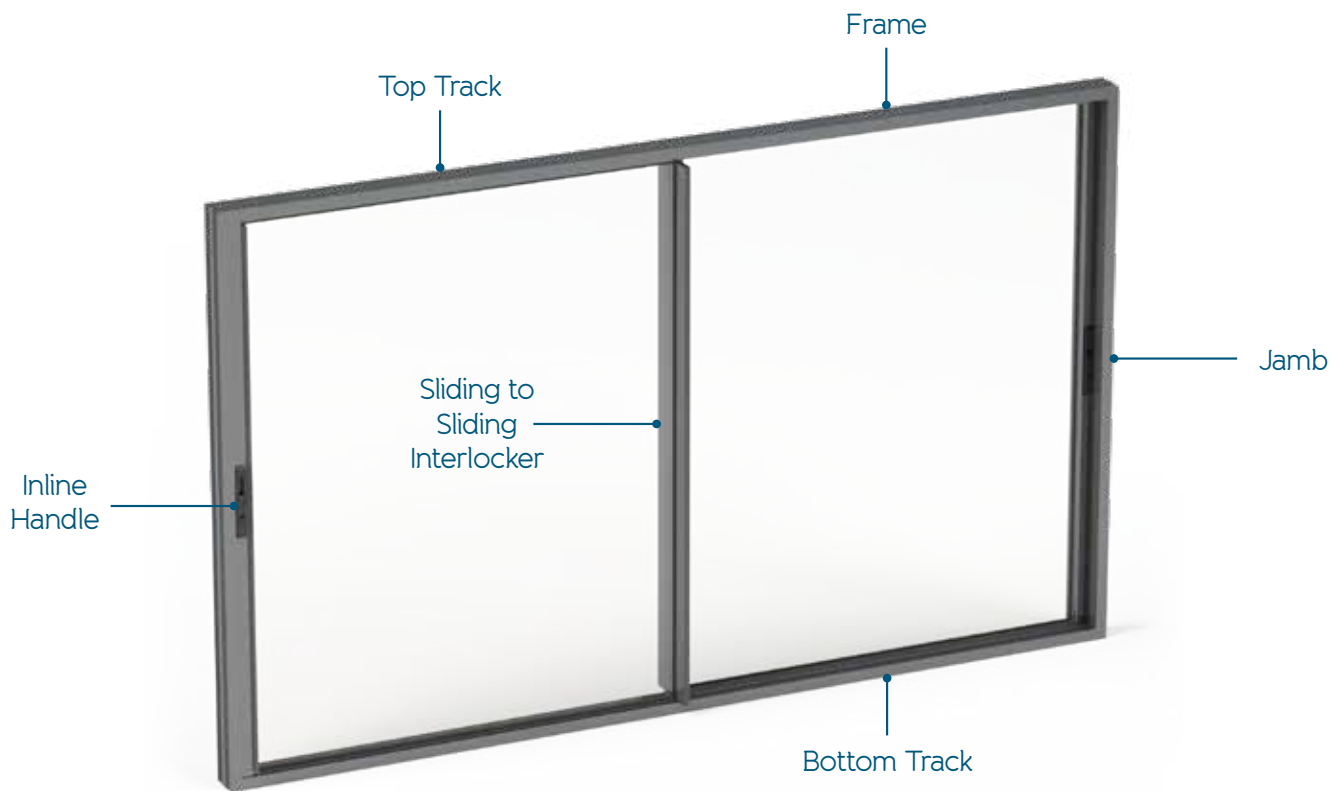
- ▶ Every inline slider is fitted with a flush faced lever handle
- ▶ Available in four attractive colours: 9910G, 7015M, 7016M, 9005M



Cylinder

- ▶ TS007 1 star cylinder
- ▶ Internal cylinder only

Inline Slider Make-Up



Make-up is dependent on the configuration chosen.

Performance and Limitations

Origin Thermal Ratings

u-Value 1.4W/m²K

Weather Rating

Air Permeability Class 4

Water Tightness Class 7A

Resistance to Wind Load Class A3

Exposure Category 1200

Performance Testing

PAS 24 Certified (Document Q Compliant)*

BS6375 Parts 1, 2 and 3 Certified

Accreditation

ISO 9001

Size Limitations

Maximum individual panel size:

2200mm wide x 3000mm tall*

**individual panels cannot exceed 6sqm.*

The height of an individual panel cannot exceed 3 times its width

Minimum individual panel size:

550mm wide x 1600mm tall

Building Regulation Requirements

New Build
and Extensions 2.0 W/ (m²K)

Replacements 1.8 W/ (m²K)

Energy Rating E or better

All doors must conform to these requirements

Glazing Specifications

Standard Glass SKN176 / 18mm Thermobar / Clear / Toughened

Laminate 6 and 6.8 Glass 6mm Climbaguard Low E / 18mm Thermobar / Clear

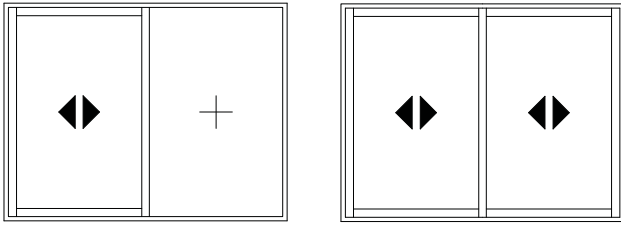
Laminate 8 and 8.8 Glass 8mm Climbaguard Low E / 12mm Thermobar / Clear

Solar Reflective Sunguard Silver 20

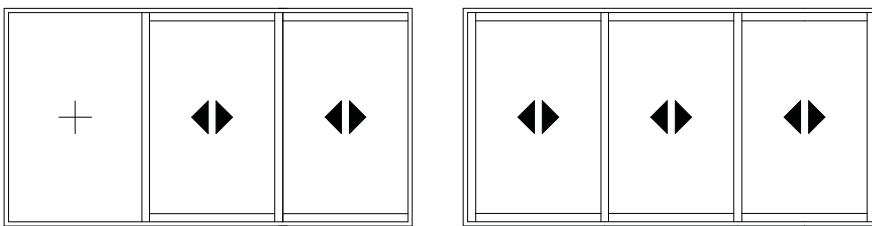
*Only available on 1+0 configuration with a triple track

Master Configurations

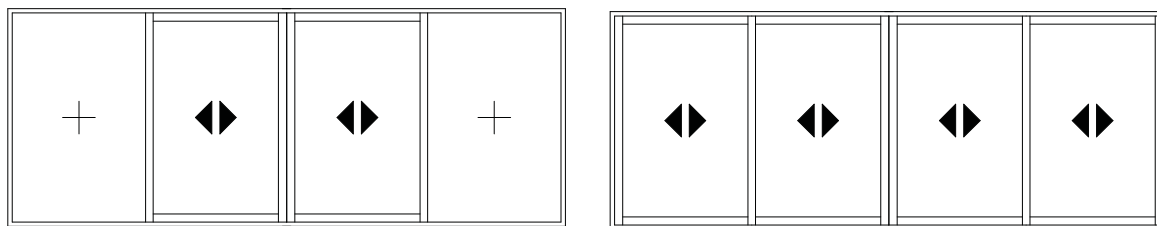
2 panel



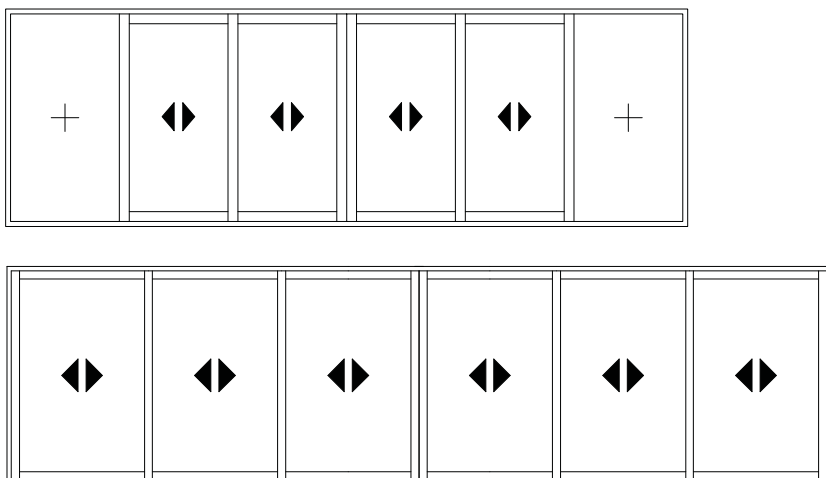
3 panel



4 panel

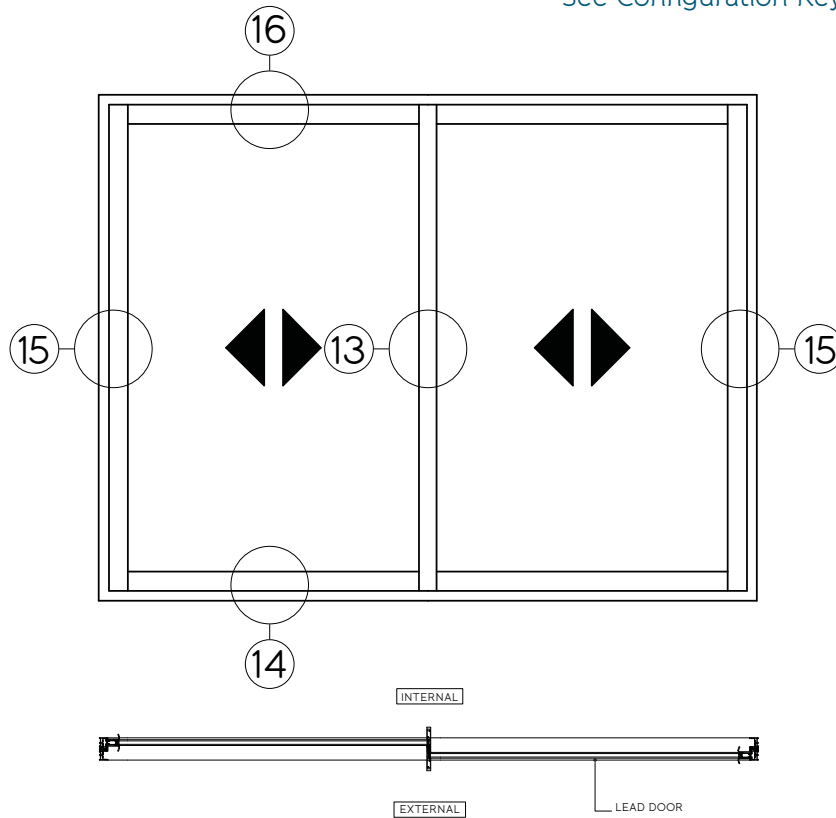


6 panel



Master Configuration: 2 panel (2+0)

See Configuration Key for section detail ▶



2+0

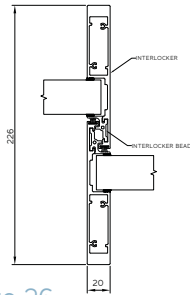
See page 09 for configurations

Key features

- ▶ Both panels can be sliding, or one can be fixed with one sliding
- ▶ Traditional patio door style

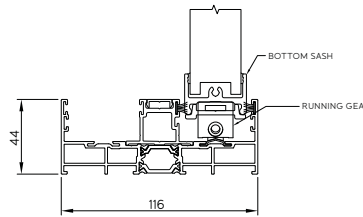
Configuration Key

13 - Sliding interlocker to sliding interlocker detail



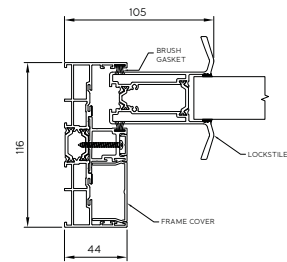
See page 26

14 - Sliding panel to double frame (bottom track) detail



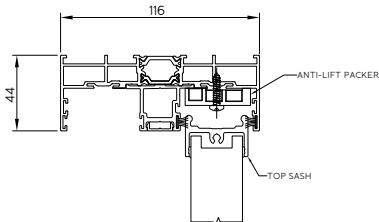
See page 27

15 - Sliding panel to double frame (jamb) detail



See page 28

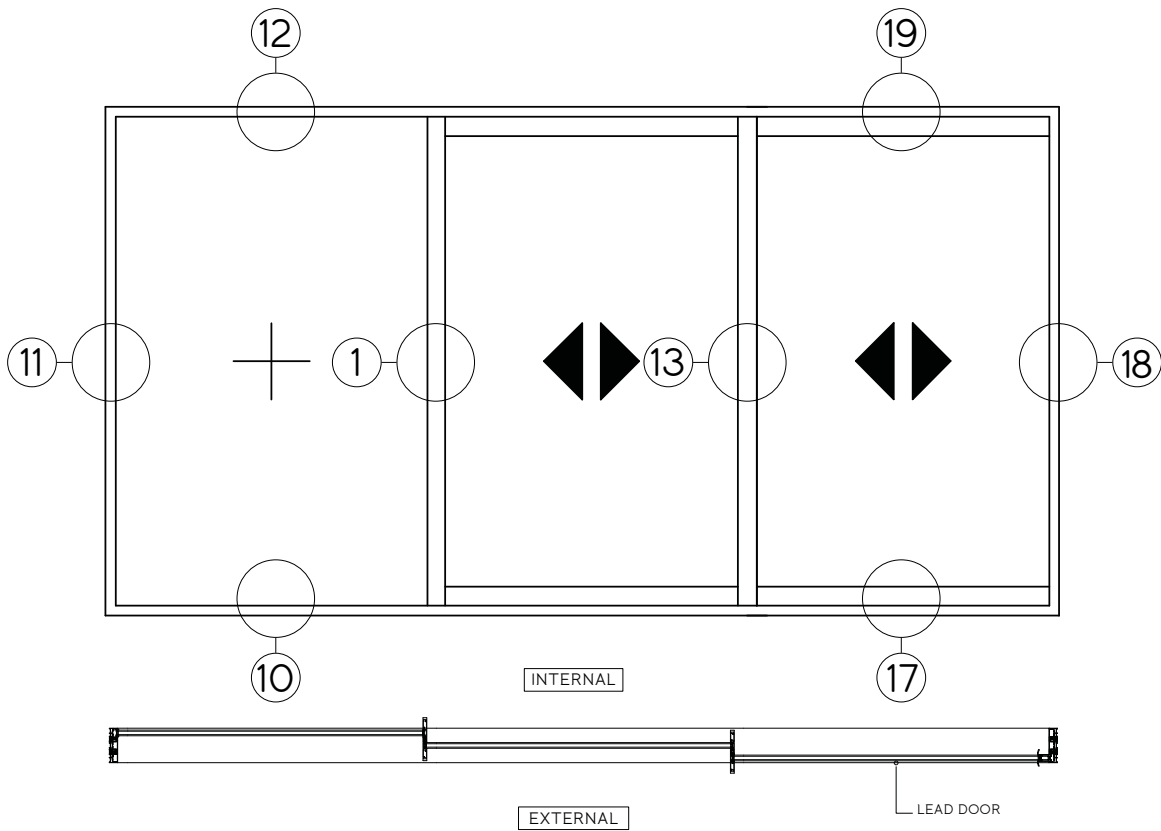
16 - Sliding panel to double frame (top track) detail



See page 29

Master Configuration: 3 panel (shown is 2 sliding and 1 fixed - 2+1)

See Configuration Key for section detail ▶



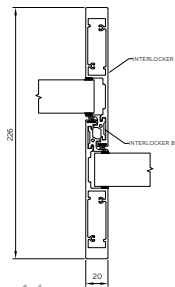
Key features

- ▶ Fixed pane can be specified on the left or right
- ▶ All panels can slide or flexible opening

2+1
See page 09 for configurations

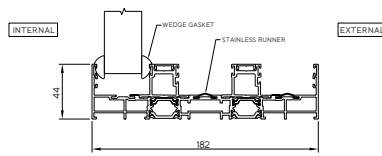
Configuration Key

1 - Fixed interlocker to sliding interlocker detail



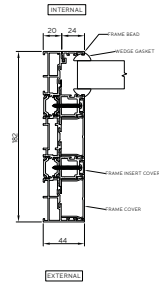
See page 14

10 - Fixed panel to triple frame (bottom track) detail



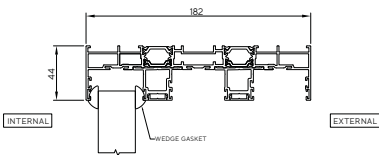
See page 23

11 - Fixed panel to triple frame (jamb) detail



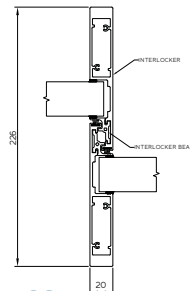
See page 24

12 - Fixed panel to triple frame (top track) detail



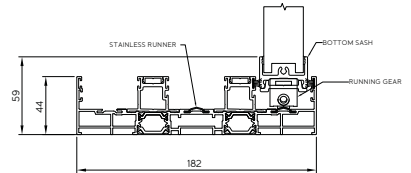
See page 25

13 - Sliding interlocker to sliding interlocker detail



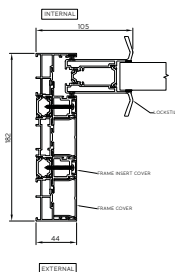
See page 26

17 - Sliding panel to triple frame (bottom track) detail



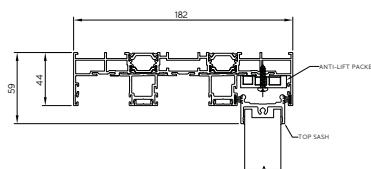
See page 30

18 - Sliding panel to triple frame (jamb) detail



See page 31

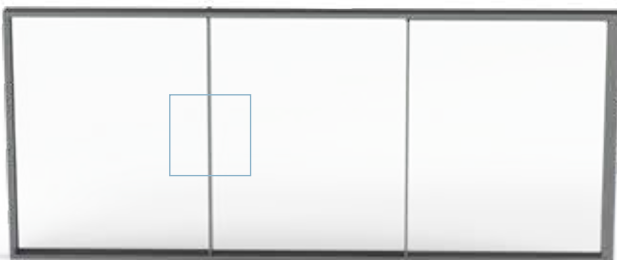
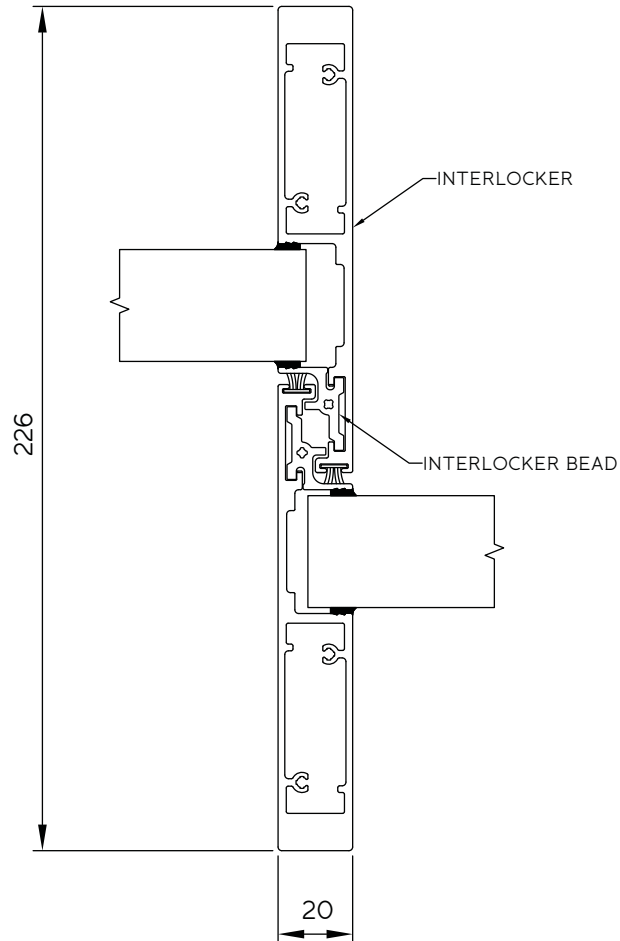
19 - Sliding panel to triple frame (top track) detail



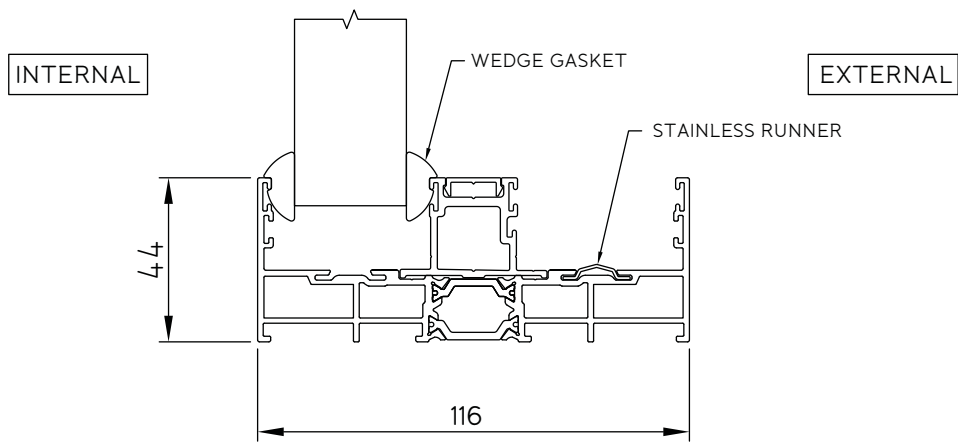
See page 32

Technical Drawings

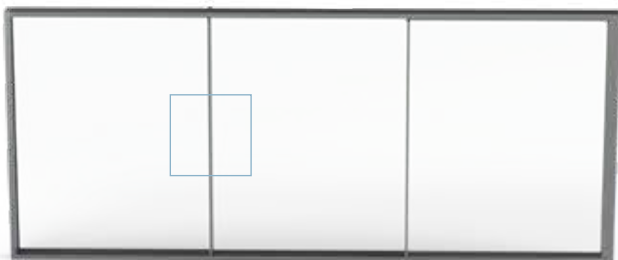
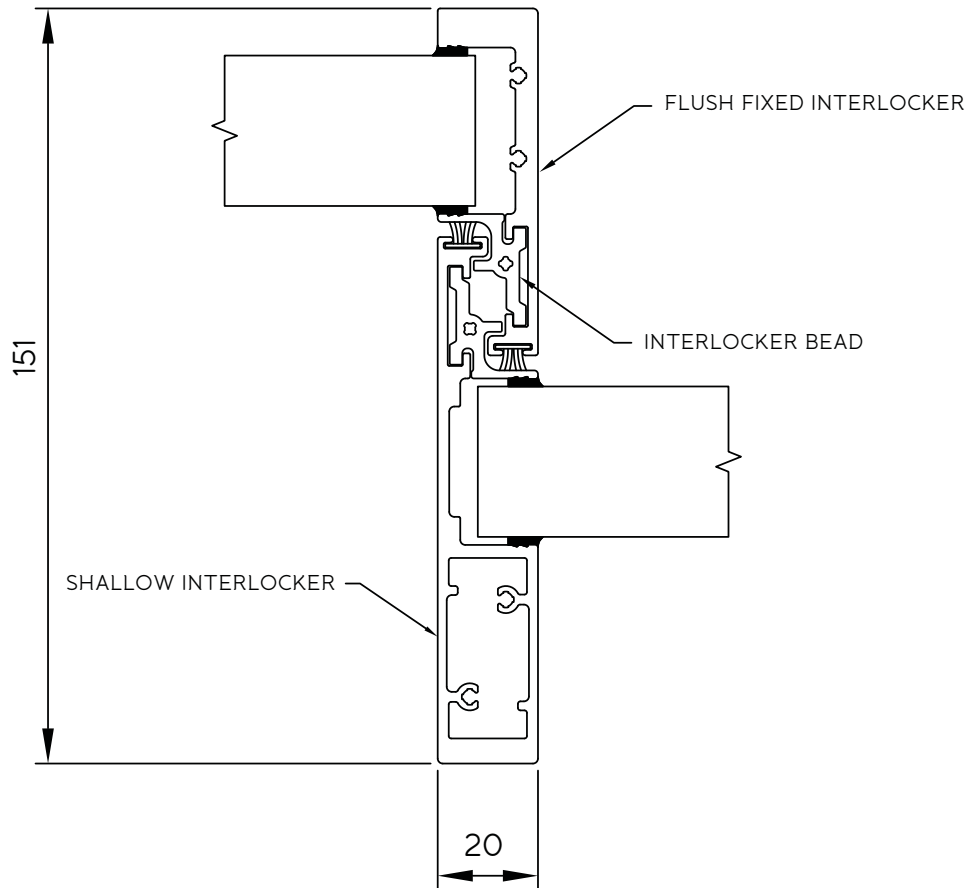
1 Fixed interlocker to sliding interlocker detail



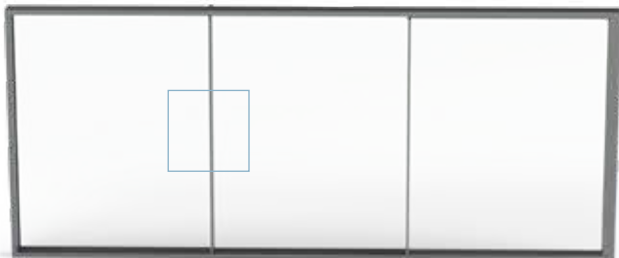
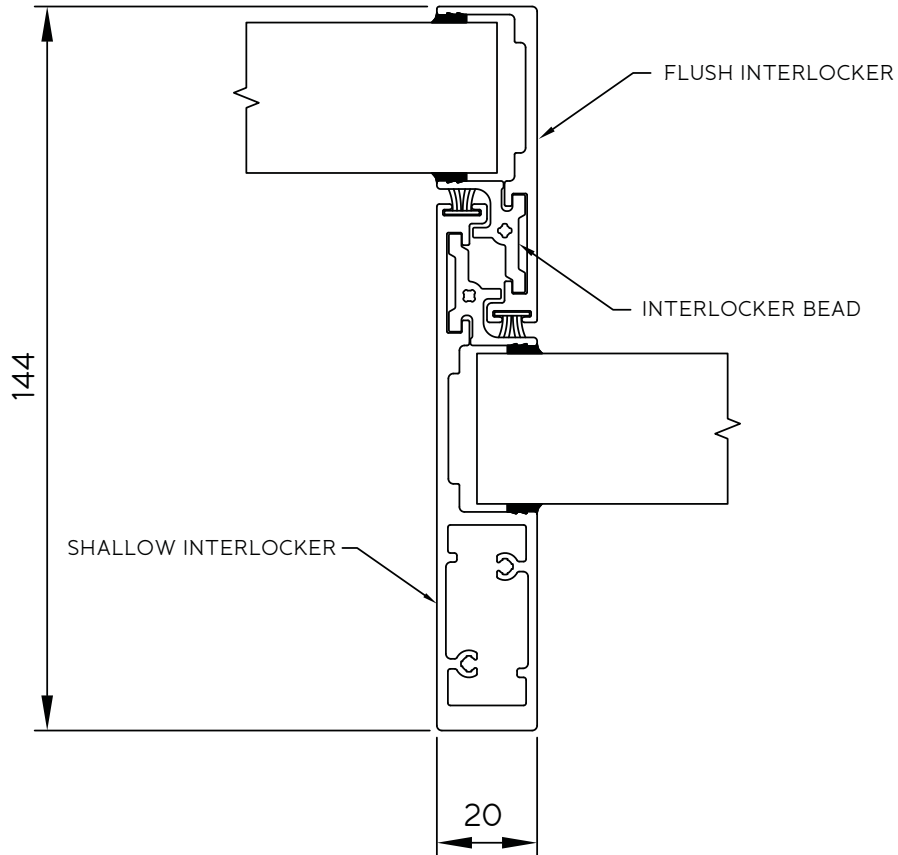
2 Fixed panel to double frame (bottom track) detail



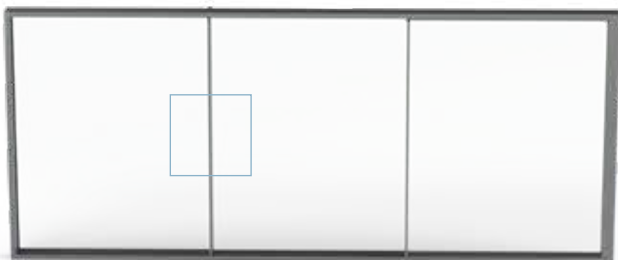
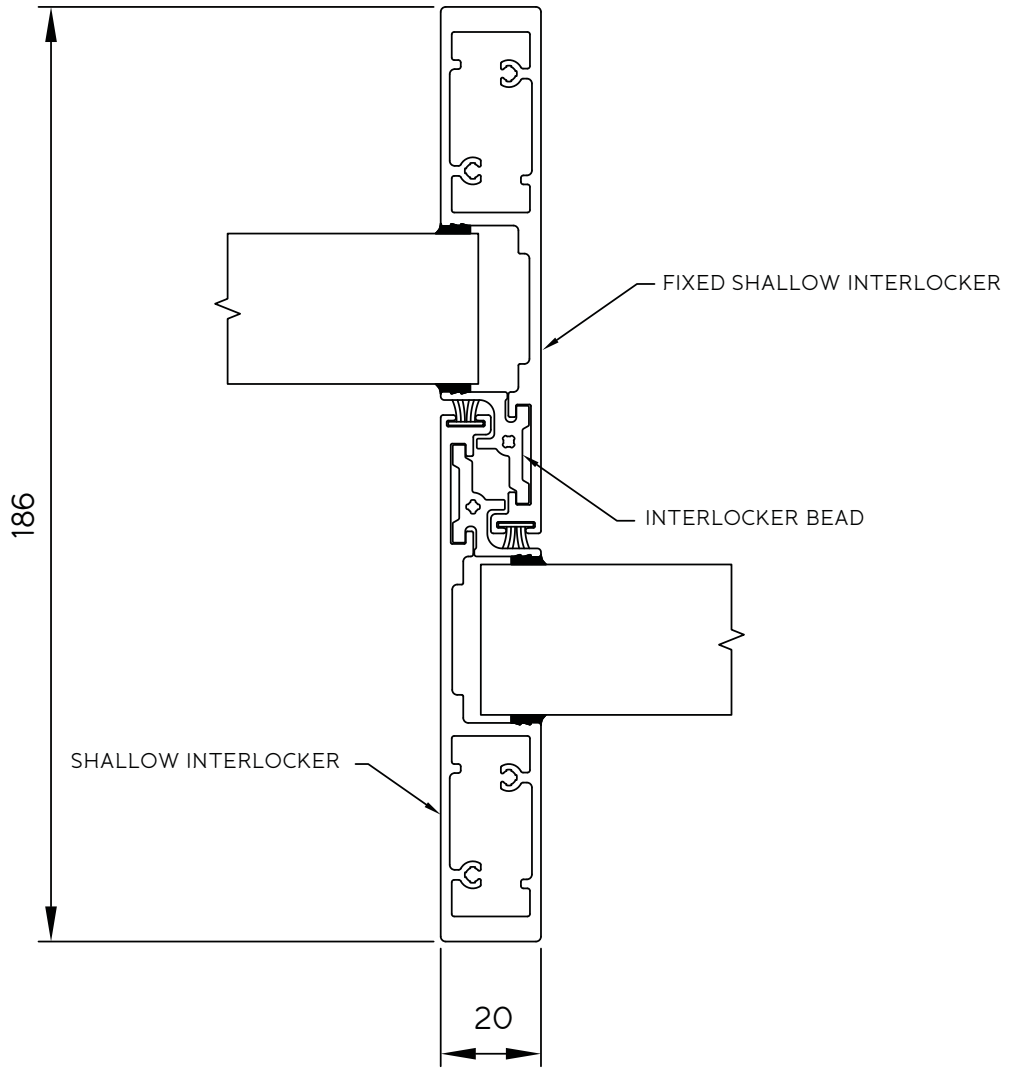
3 Flush fixed interlocker to sliding shallow interlocker



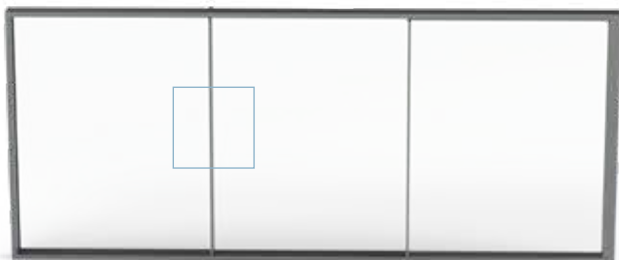
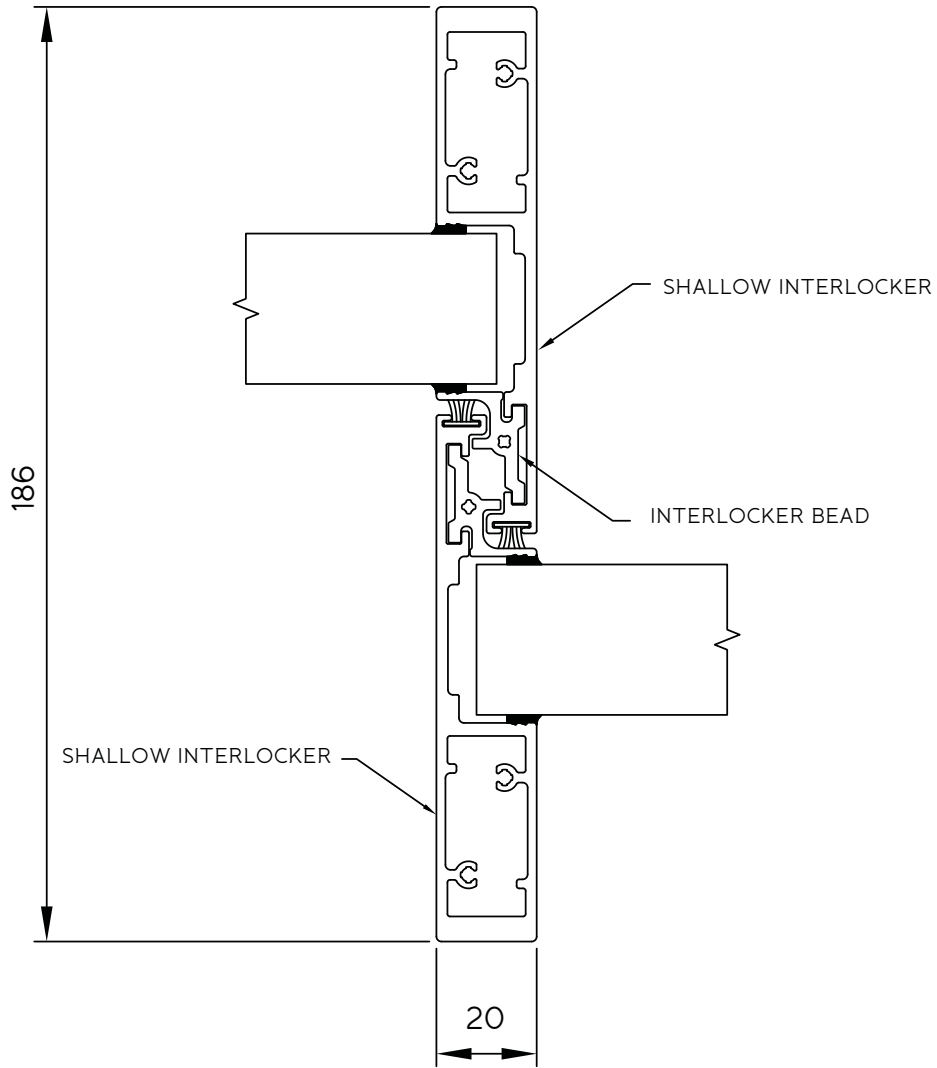
4 Flush interlocker to sliding shallow interlocker



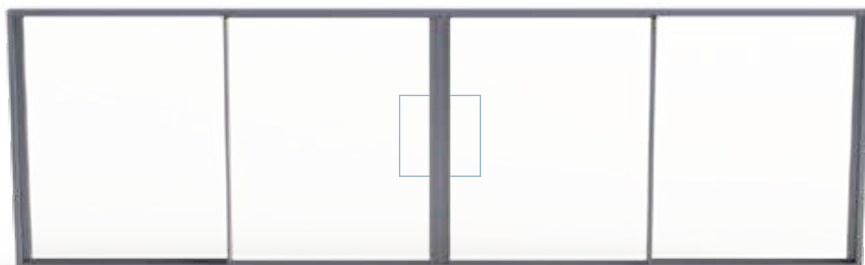
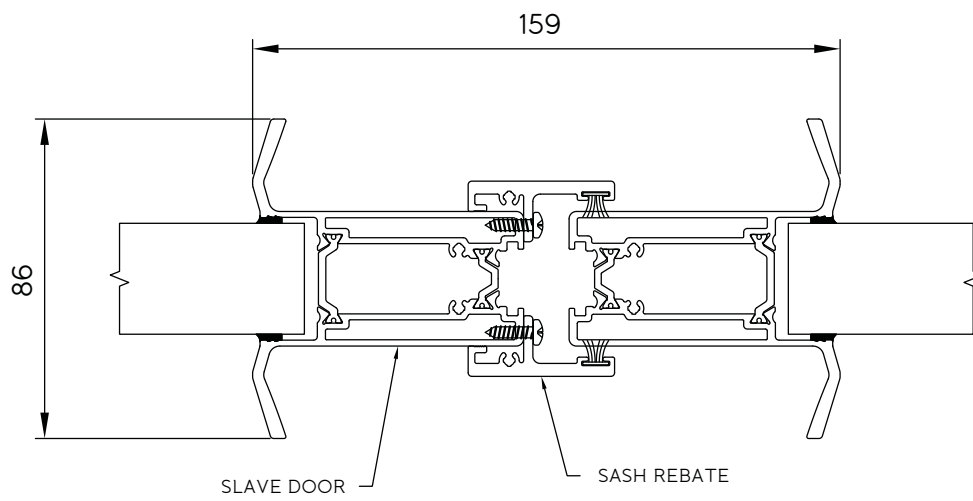
5 Fixed shallow interlocker to sliding shallow interlocker



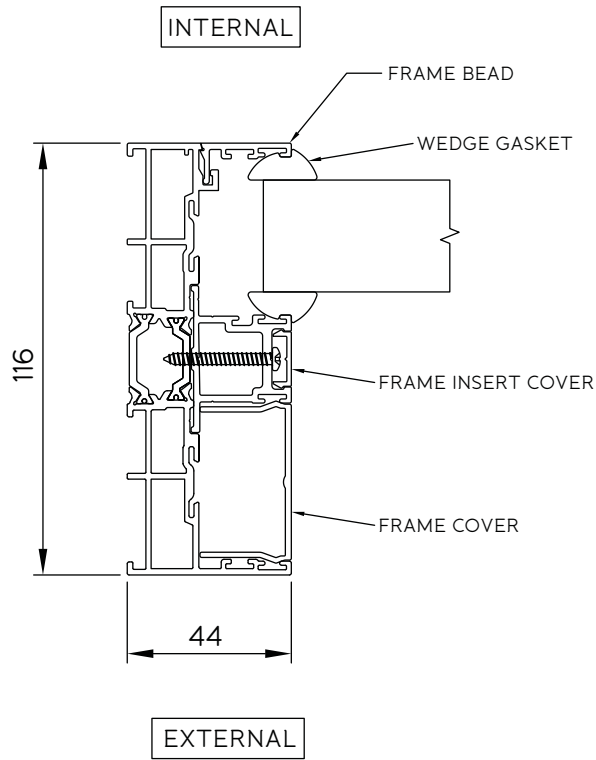
6 Sliding shallow interlocker to sliding shallow interlocker



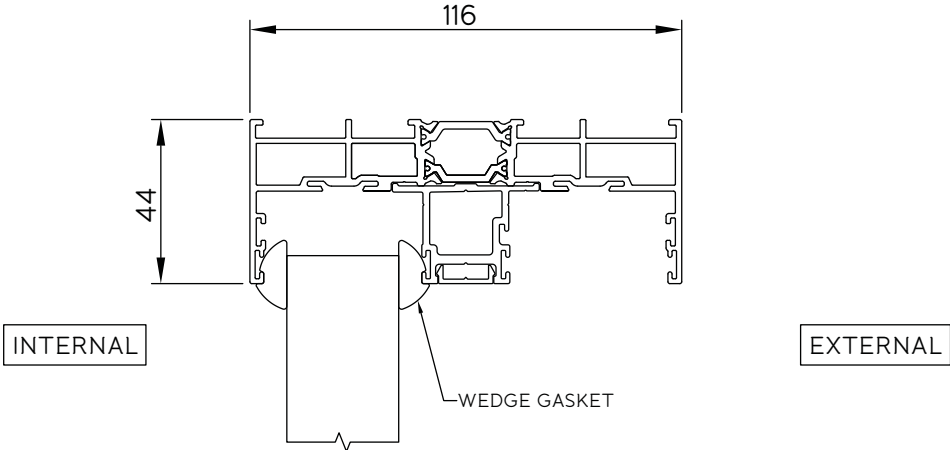
7 Sliding panel to sliding panel detail



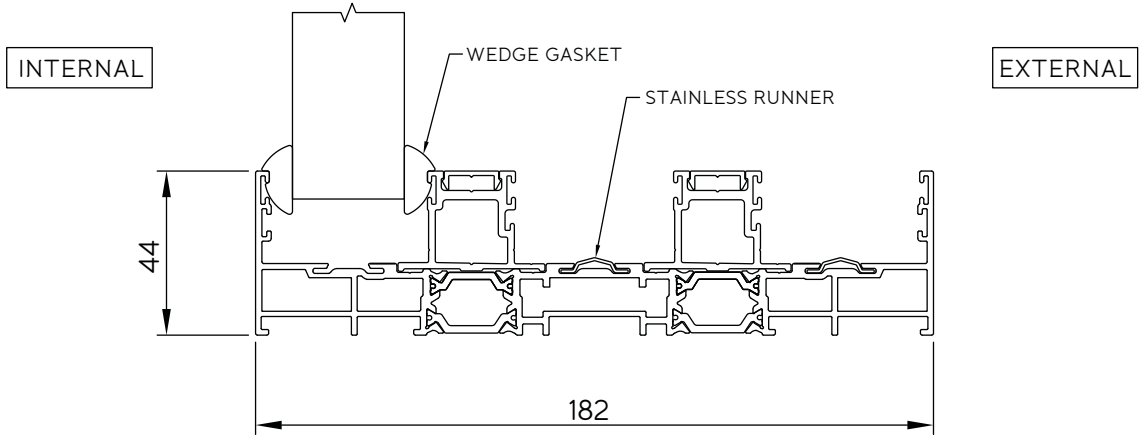
8 Fixed panel to double frame (jamb) detail



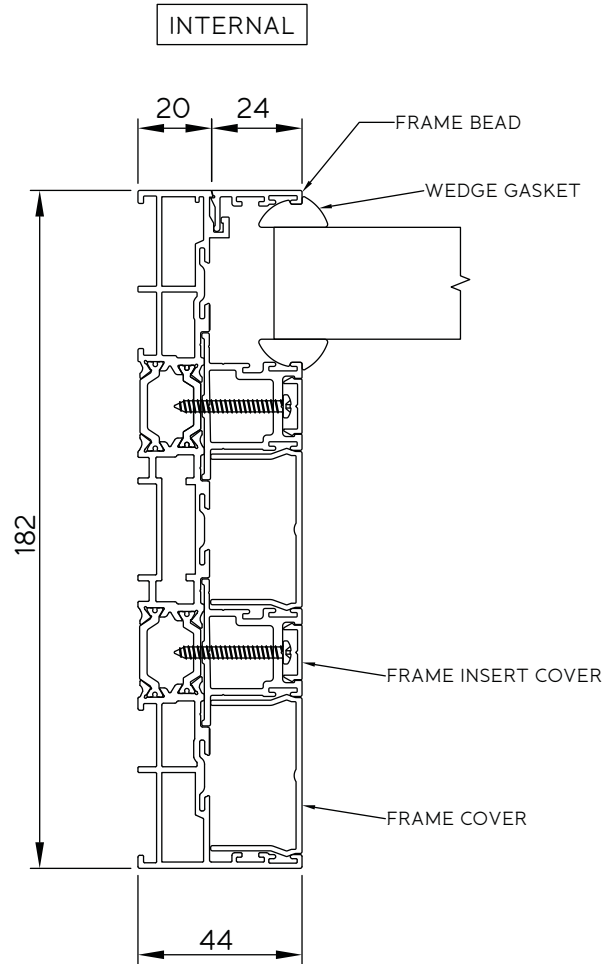
9 Fixed panel to double frame (top track) detail



10 Fixed panel to triple frame (bottom track) detail



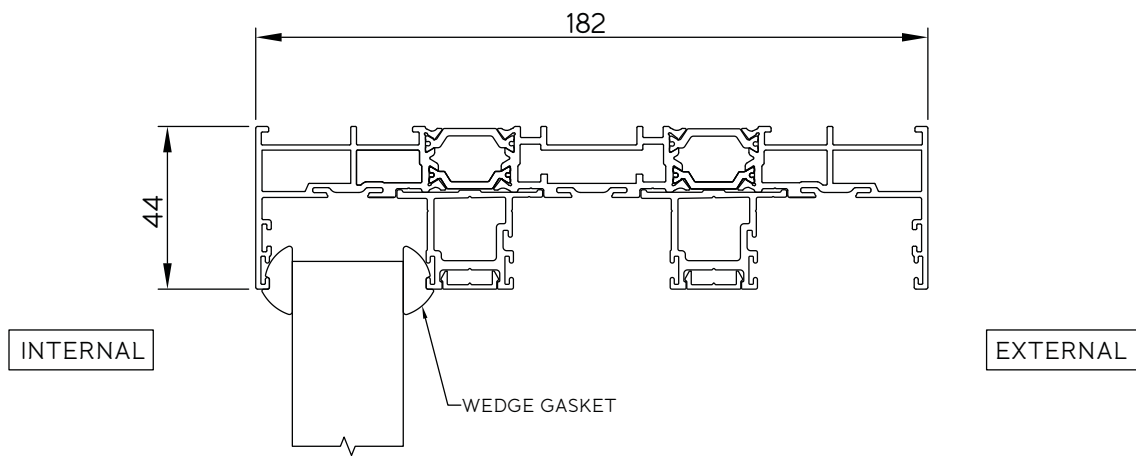
11 Fixed panel to triple frame (jamb) detail



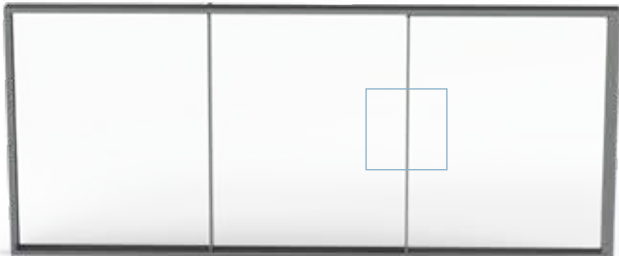
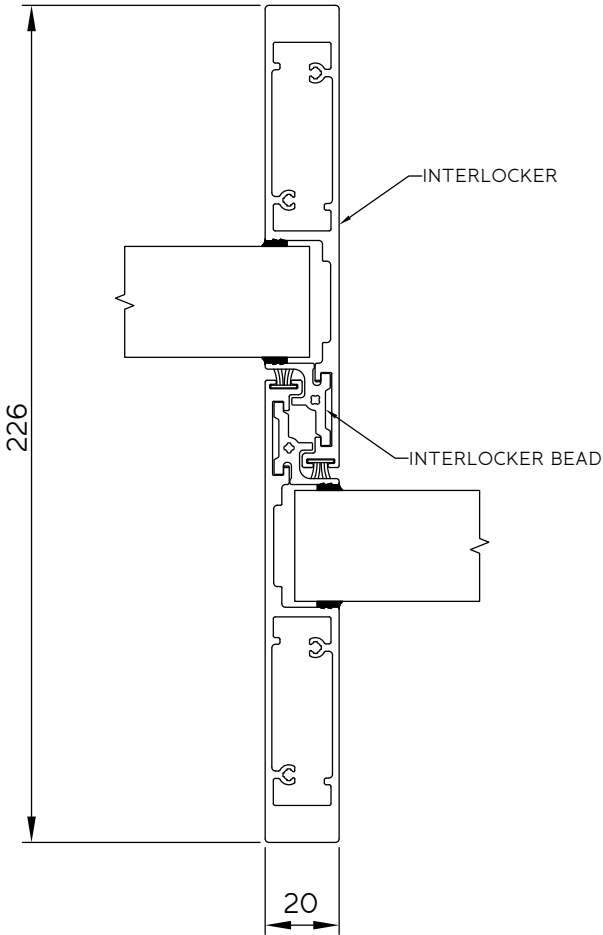
EXTERNAL



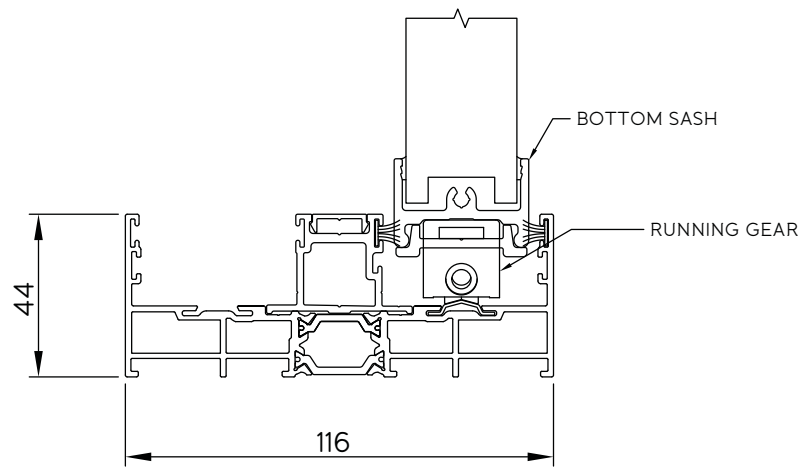
12 Fixed panel to triple frame (top track) detail



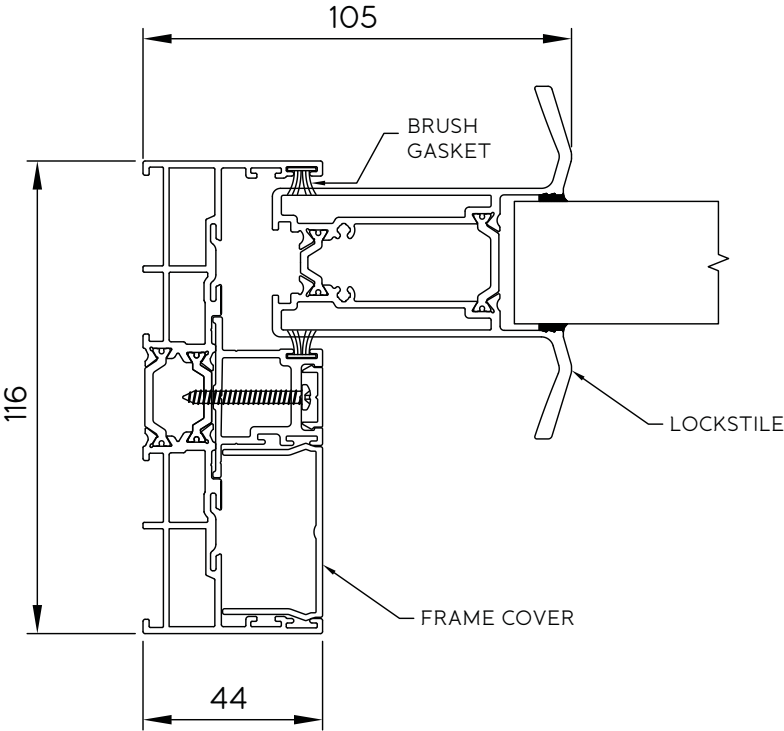
13 Sliding interlocker to sliding interlocker detail



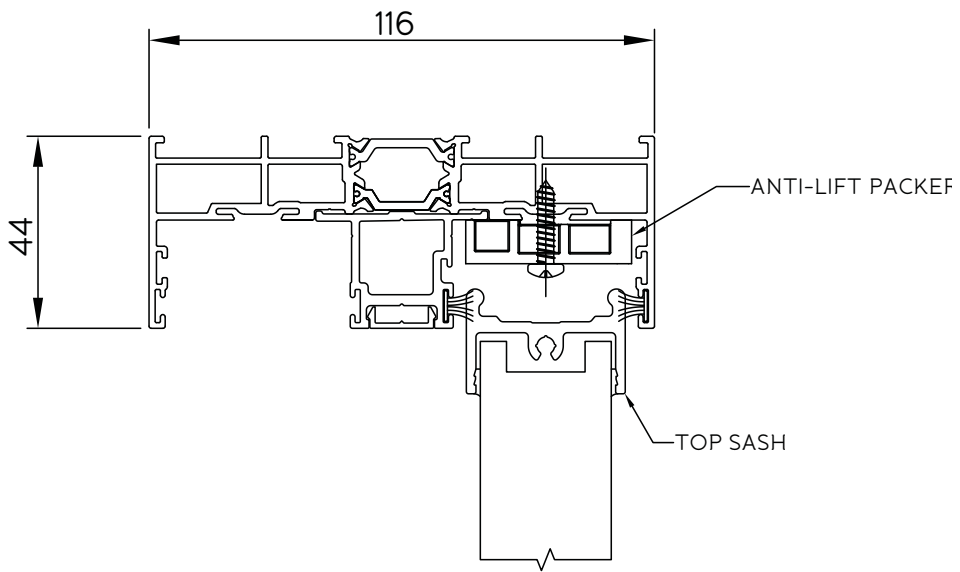
14 Sliding panel to double frame (bottom track) detail



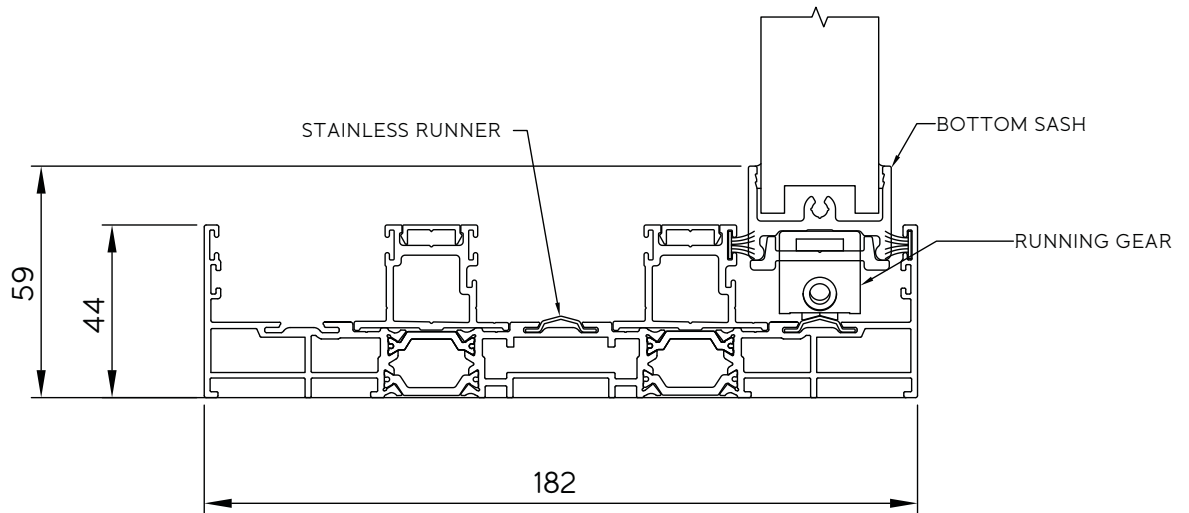
15 Sliding panel to double frame (jamb) detail



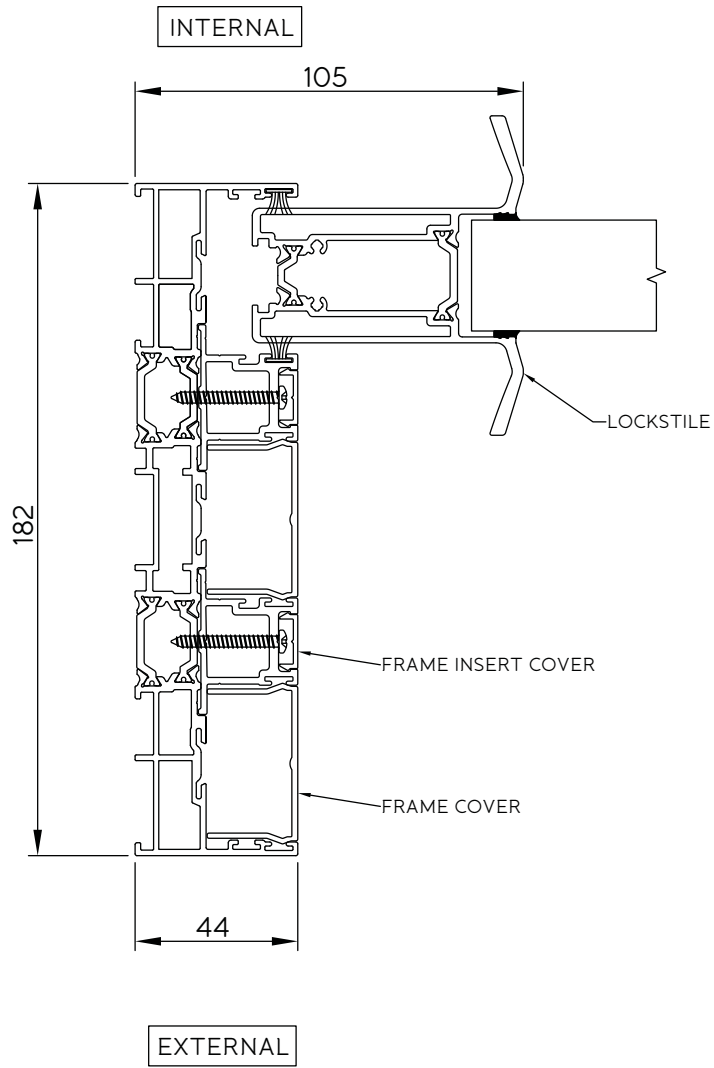
16 Sliding panel to double frame (top track) detail



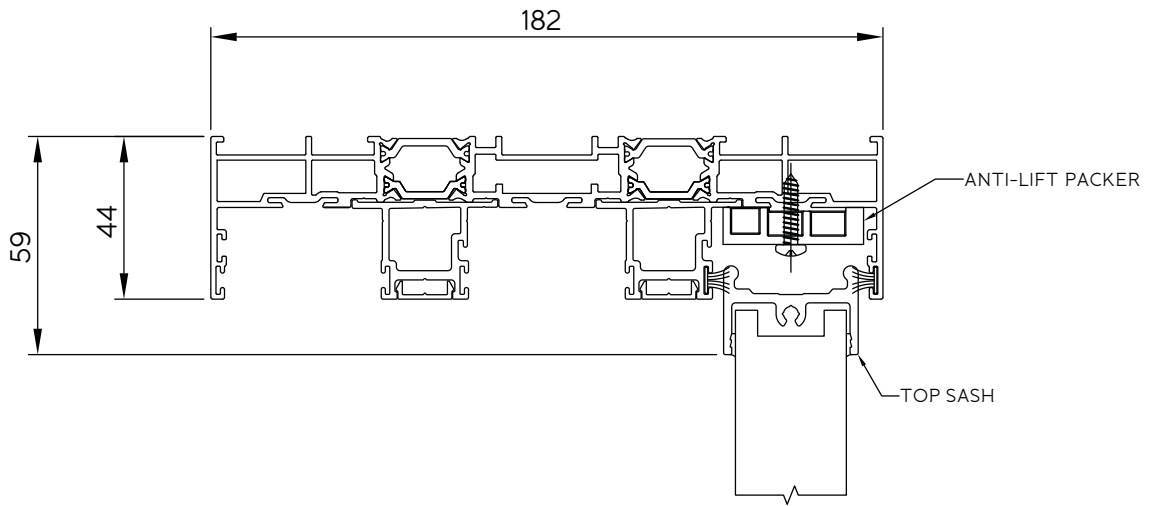
17 Sliding panel to triple frame (bottom track) detail



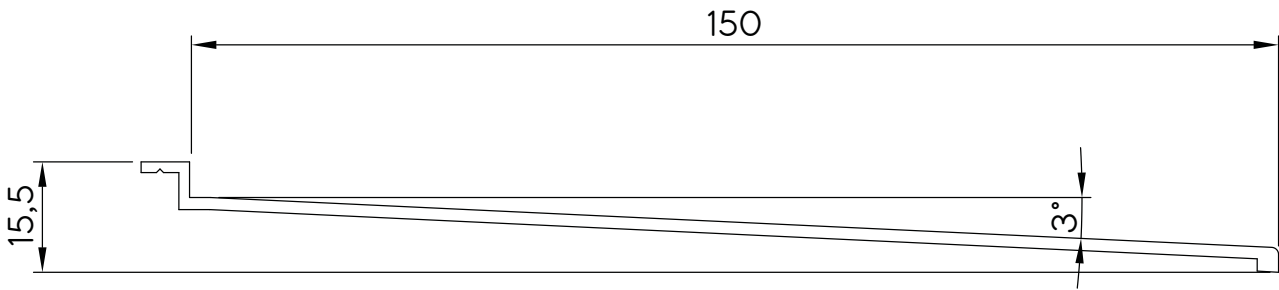
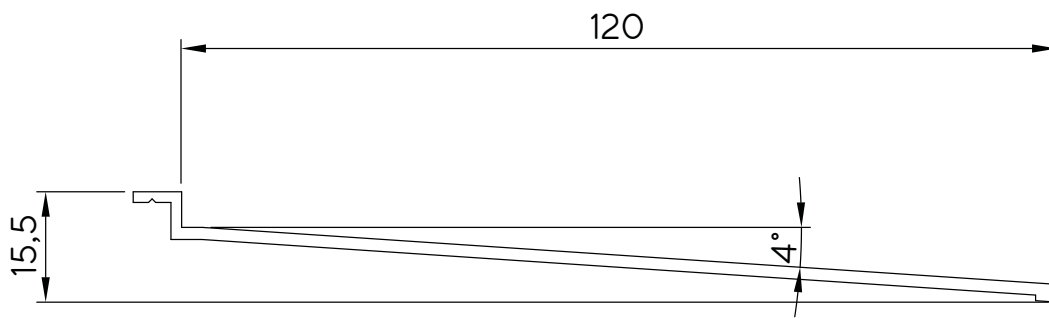
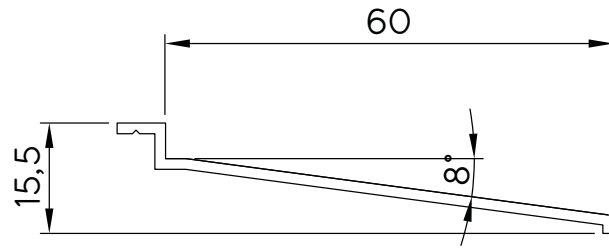
18 Sliding panel to triple frame (jamb) detail



19 Sliding panel to triple frame (top track) detail

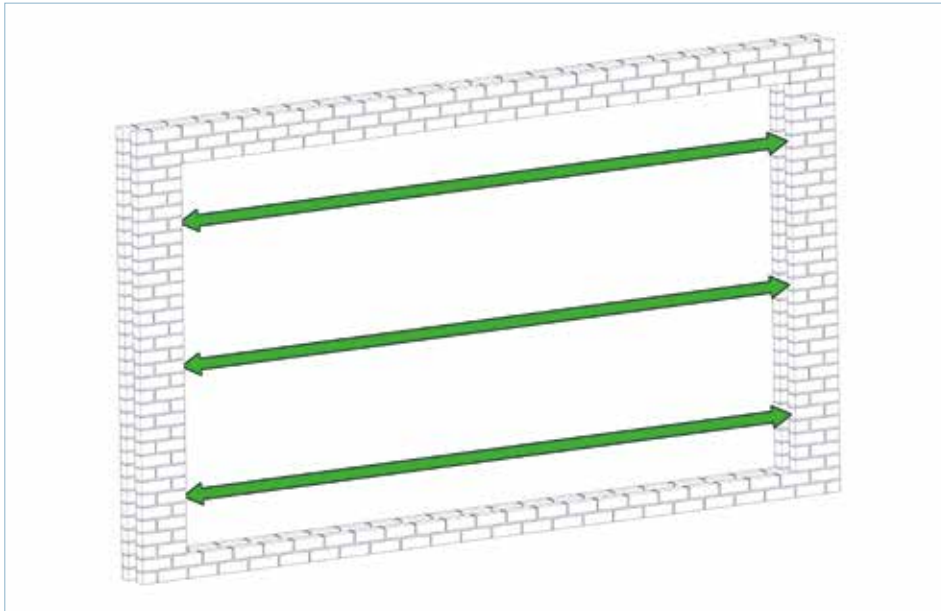


20 Drip bar (optional extra)



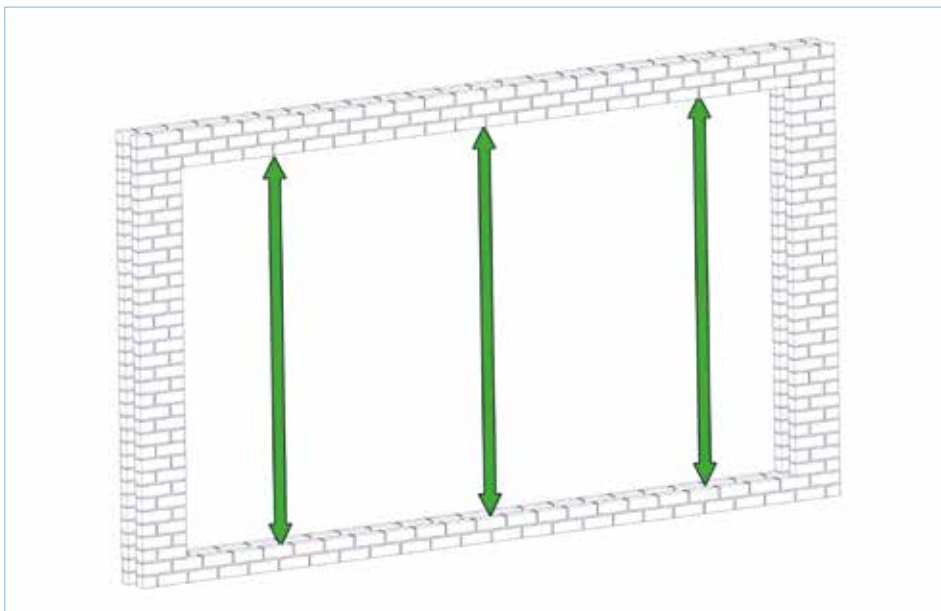
Installation Guide

1. Prepare the opening



Measure aperture width.

FIG 1



Measure aperture height.

FIG 2

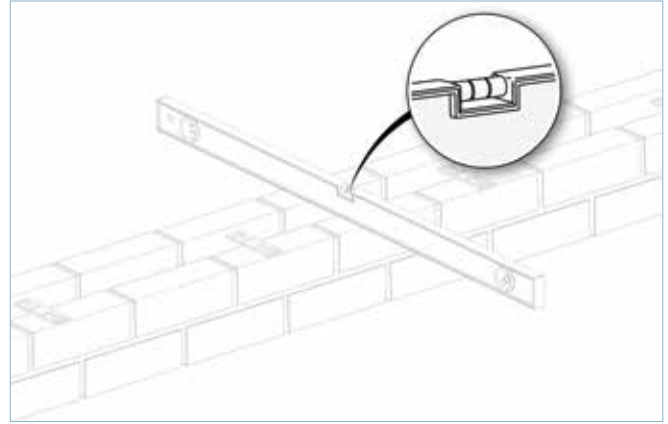
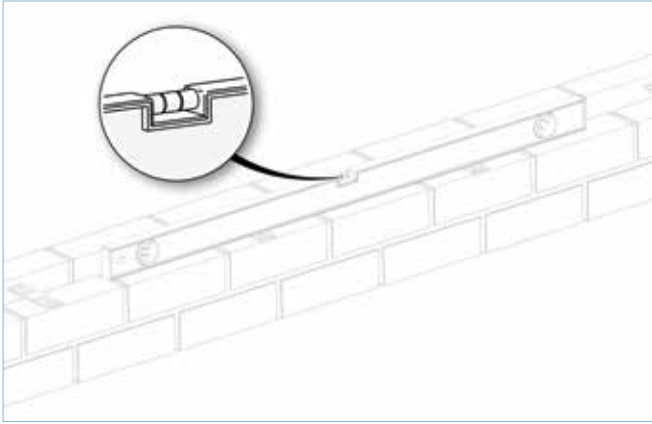
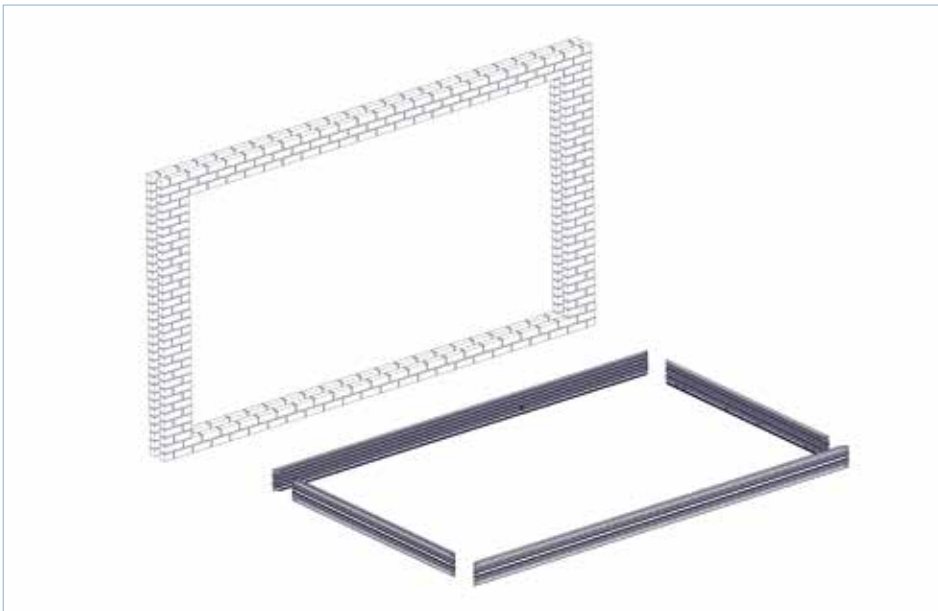


FIG 3

Level the threshold in both directions, packing every 500mm apart for the length of the opening.



Lay frame profiles in front of aperture, being careful not to scratch the powder coat.

FIG 4

2. If applicable, join the top/ bottom frame profiles together

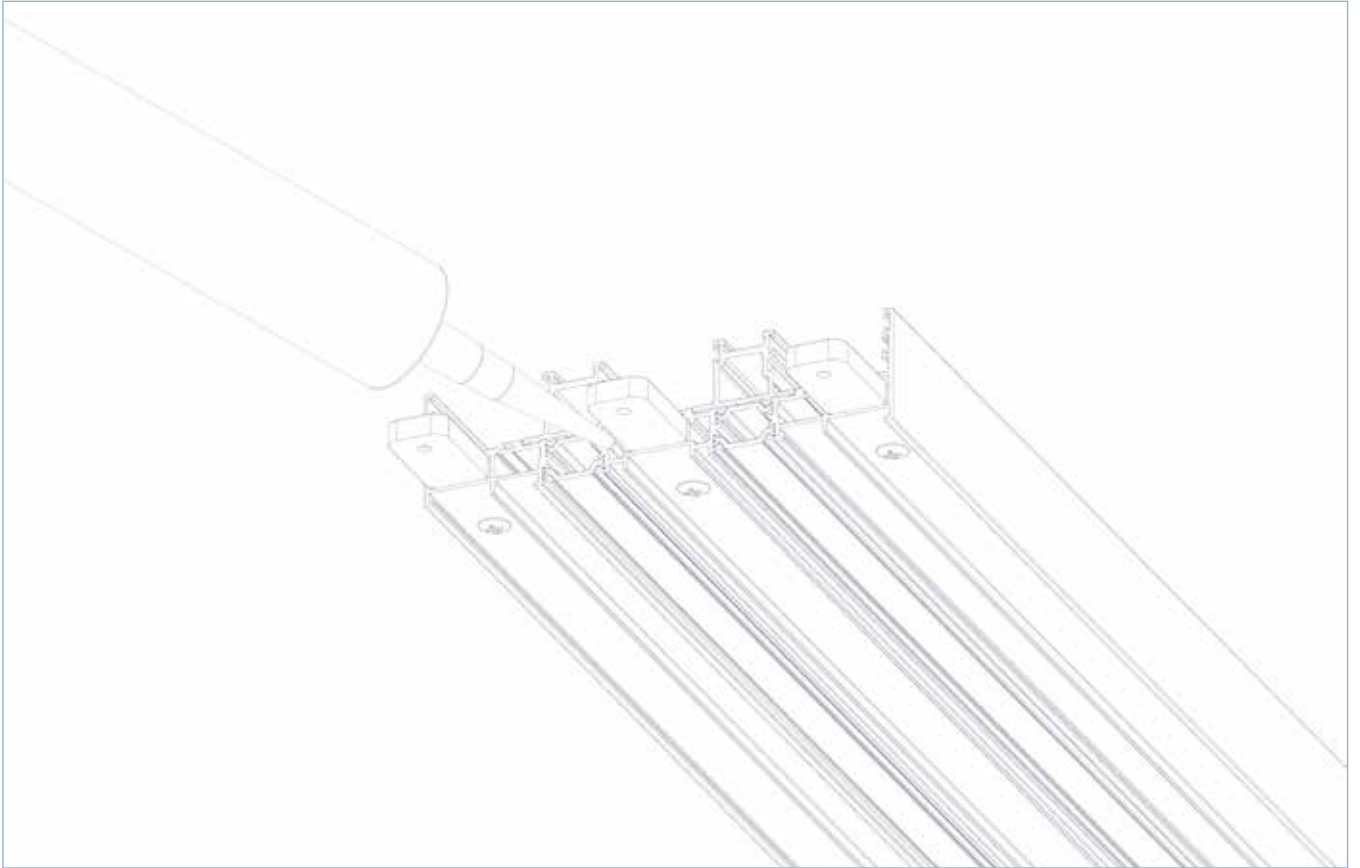
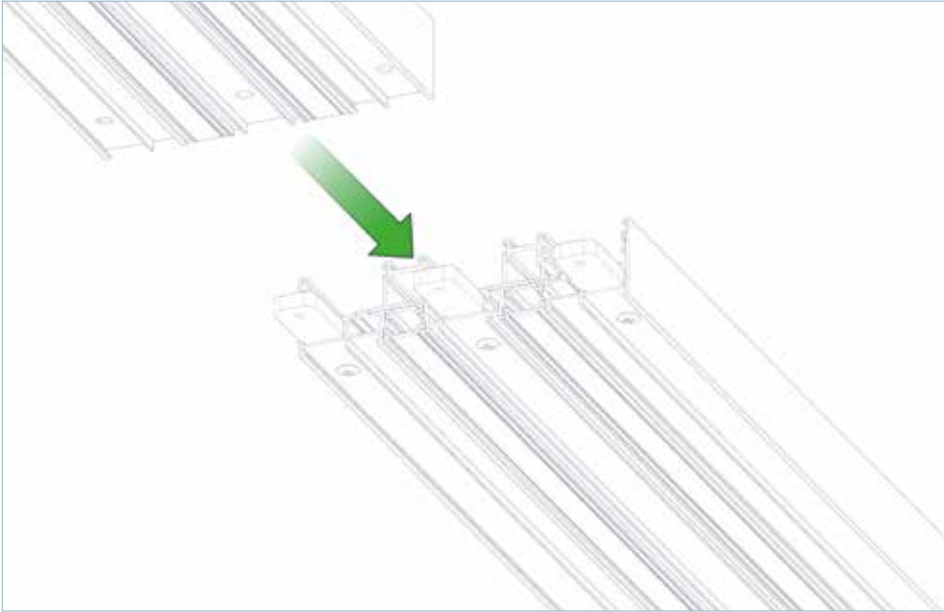


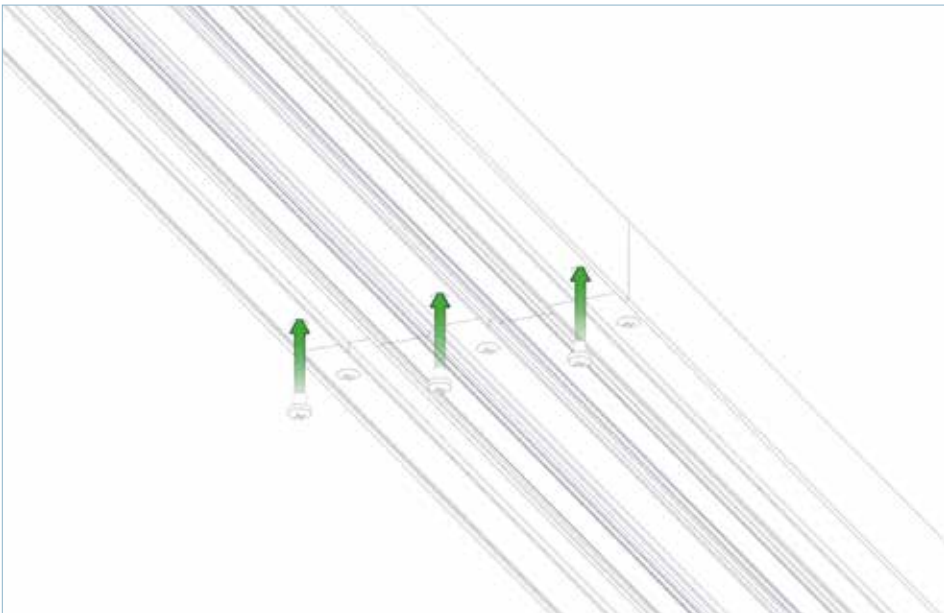
FIG 5

Apply suitable sealant on ends of profile and around the pre-inserted frame connectors.



Connect the frame profiles together.

FIG 6



Fix the frame profiles together and repeat for remaining frame pieces.

FIG 7

3. Connect the jambs and bottom track

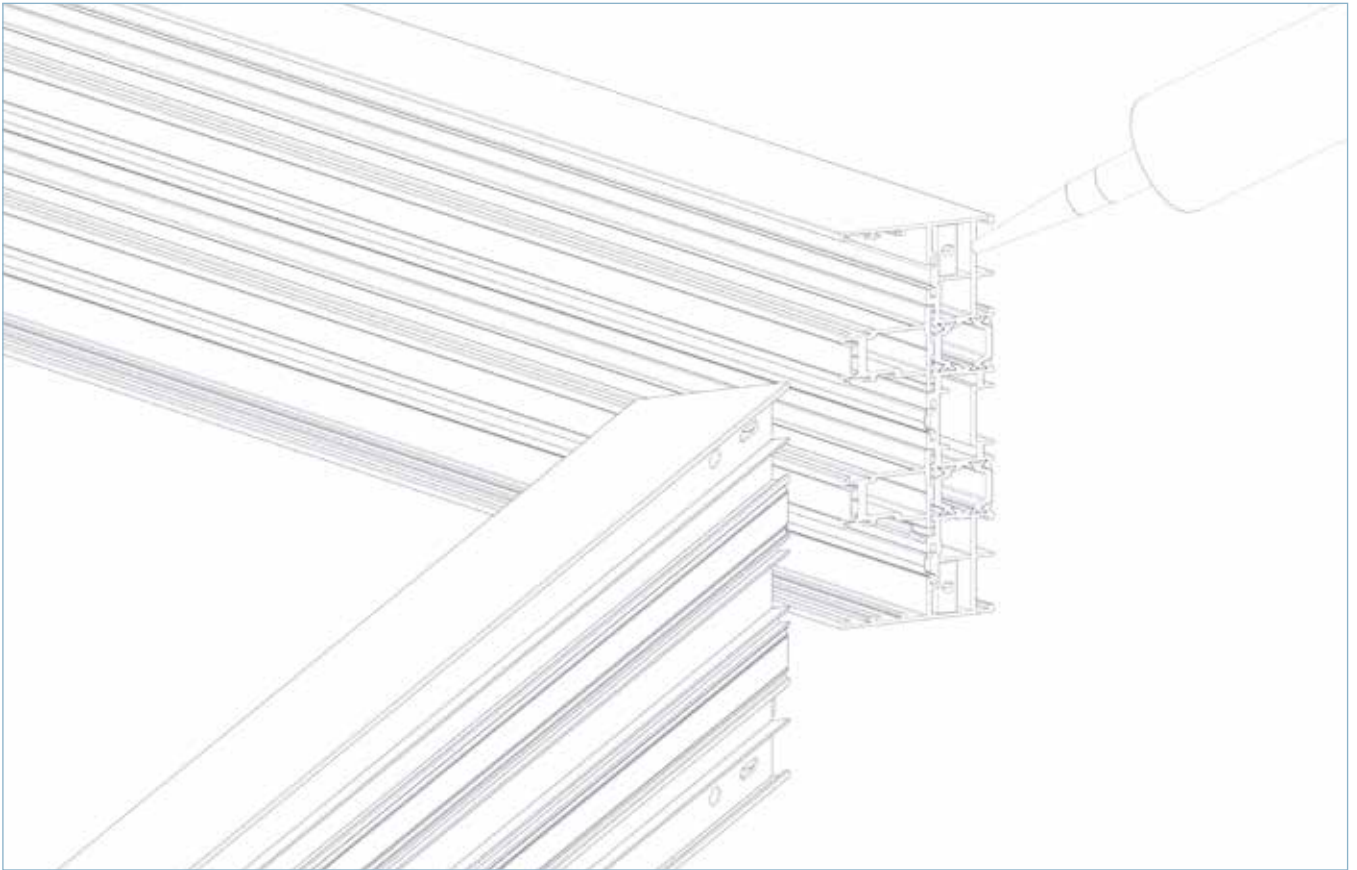
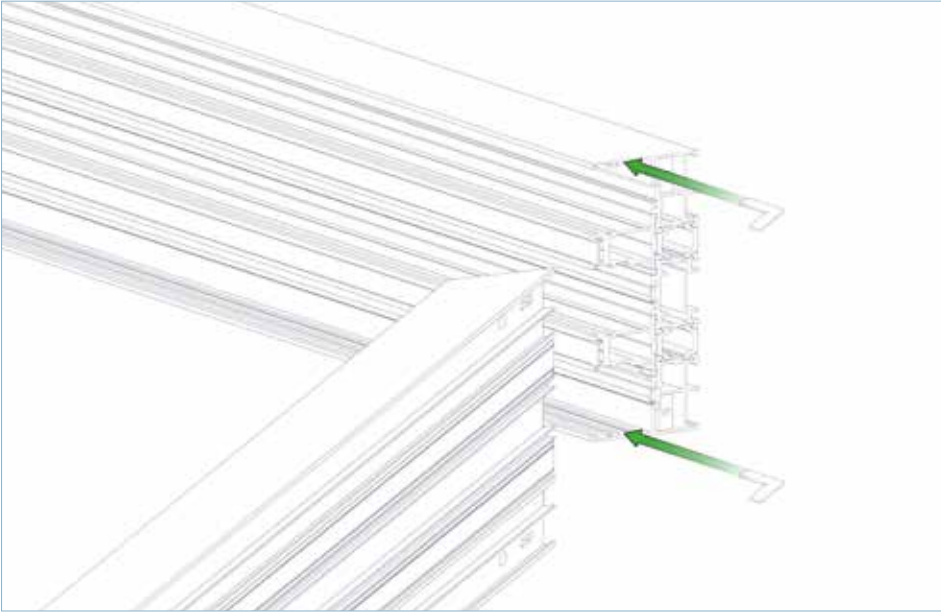


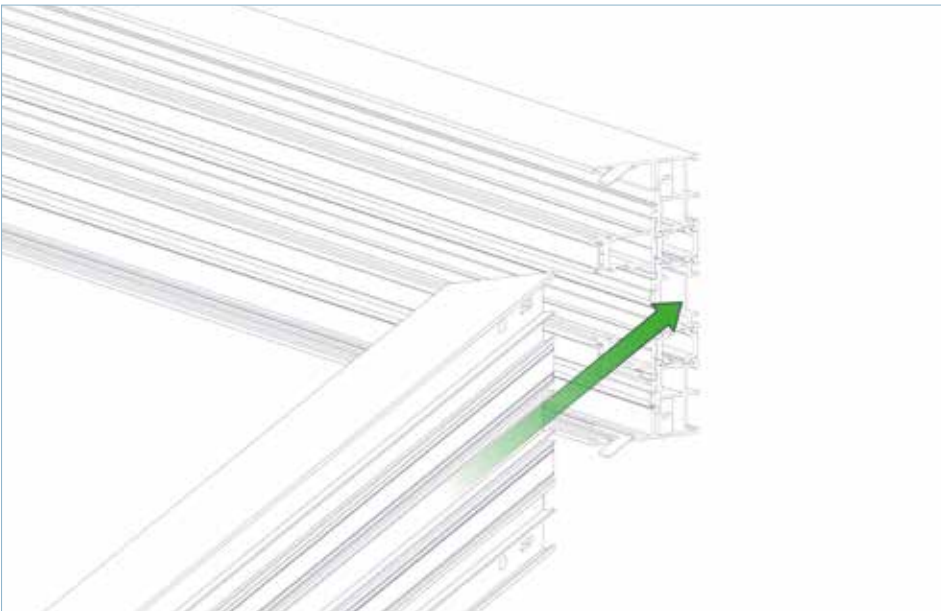
FIG 8

Apply suitable sealant to profile ends.



Insert alignment cleats to the frame. If set includes a fixed panel, one alignment cleat is required per corner and should be fitted in 25mm rebate.

FIG 9



Join jamb to bottom track.

FIG 10



Tighten the cleat joint with a 4mm Allen Key and screws provided.

FIG 11



Check joint, remove excess sealant and repeat process for second jamb.

FIG 12

4. If applicable, connect the fixed interlocker (only applicable for sets with fixed panel)

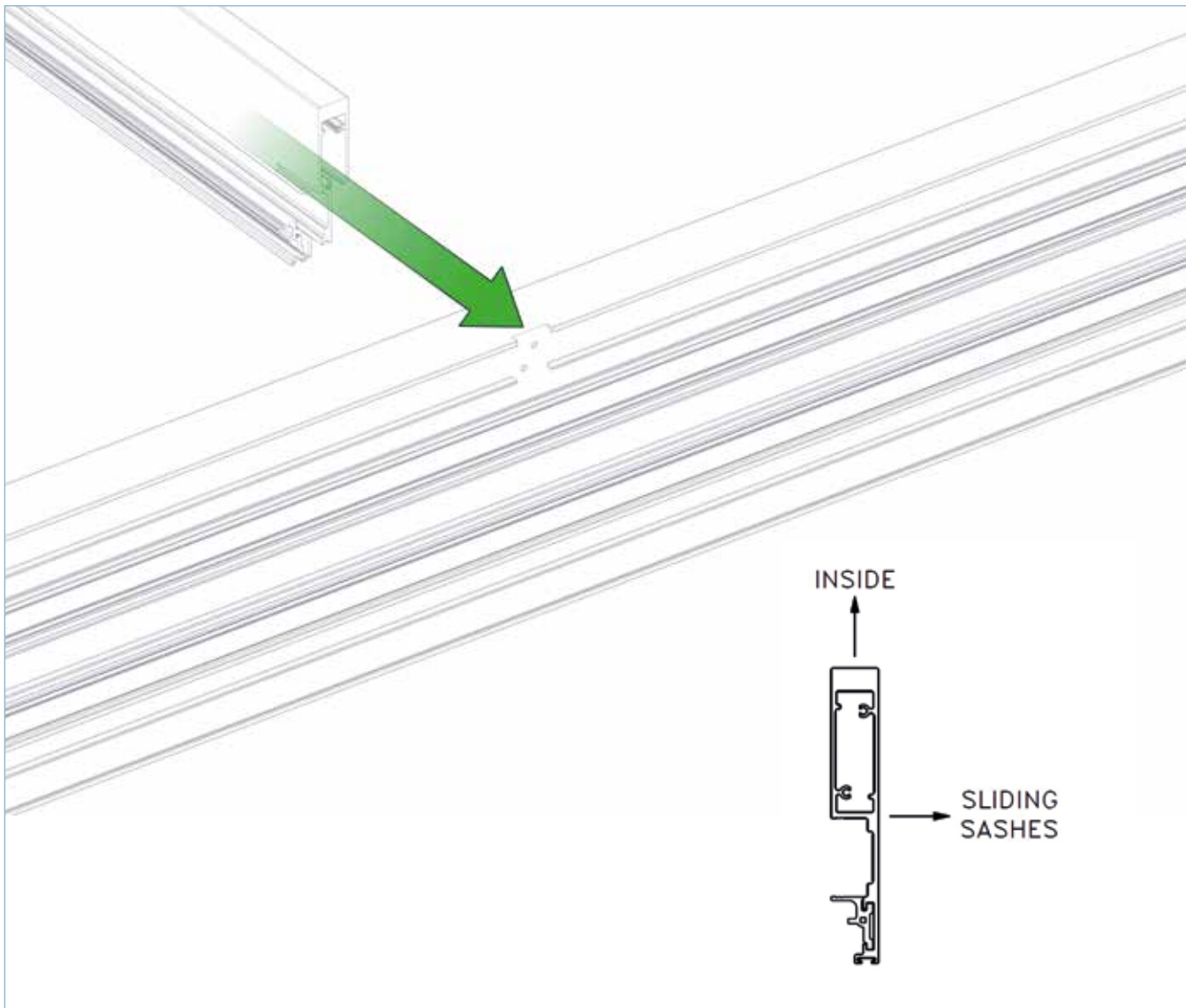
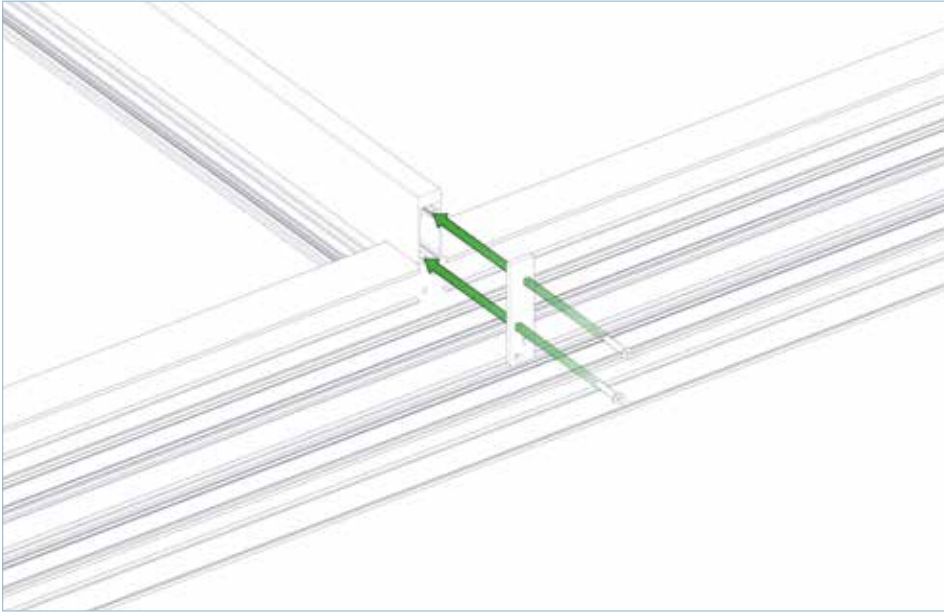


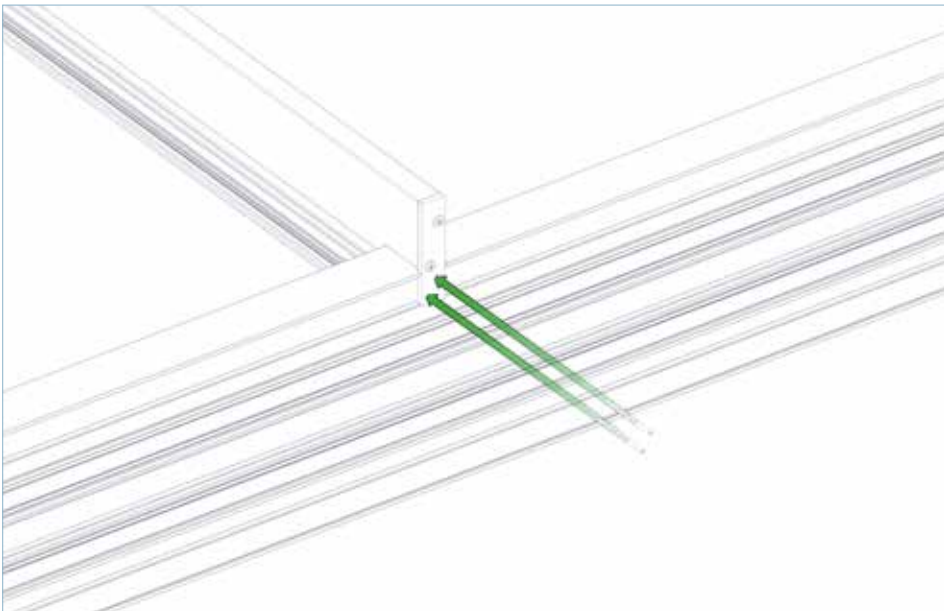
FIG 13

Align fixed interlocker to pre-made notch on bottom track. Ensure profile position is as per section above.



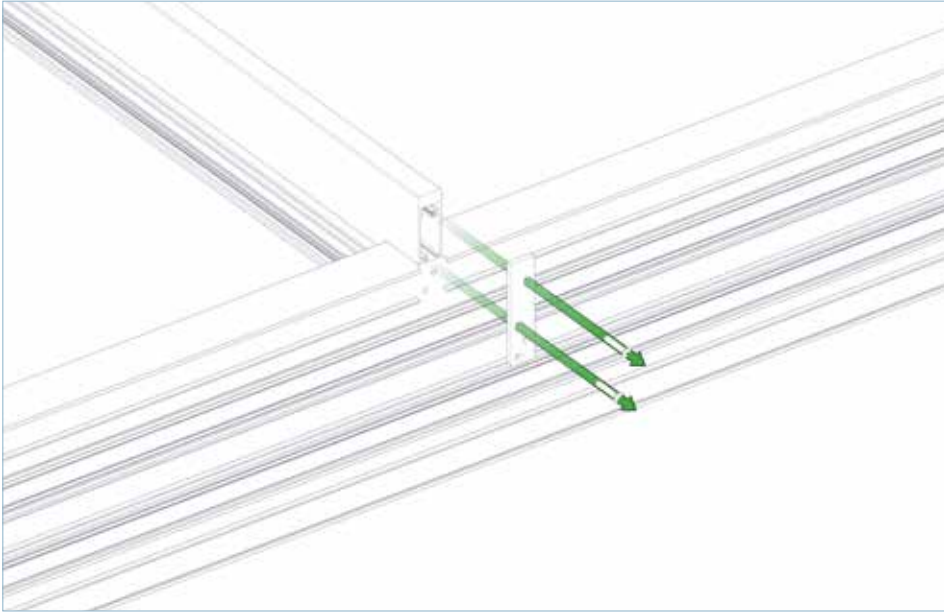
Screw interlocker end plate in to position with 3.9 x 25mm screws.

FIG 14



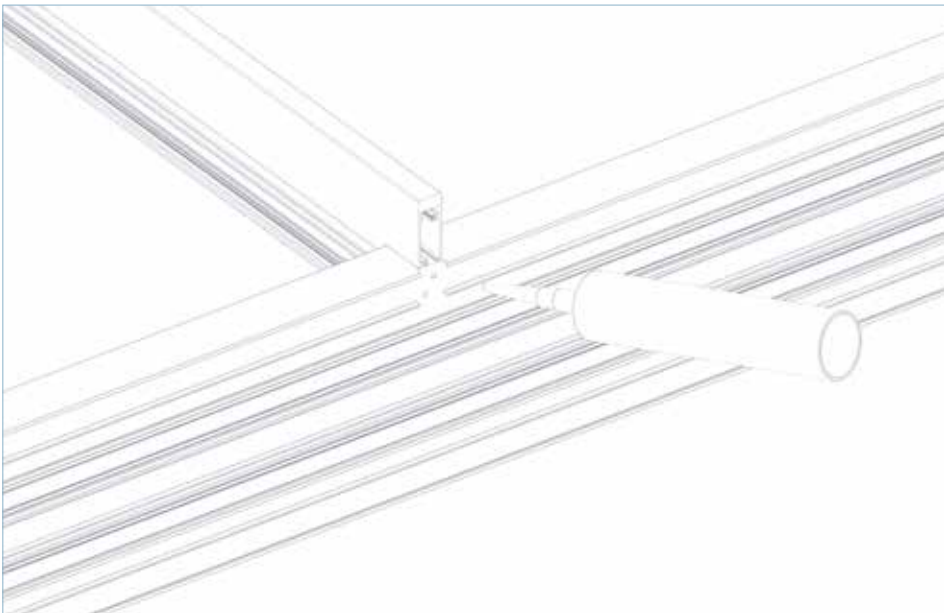
Use end plate as guide to drill 3mm pilot holes in frame. Use 3.9 x 16mm screws.

FIG 15



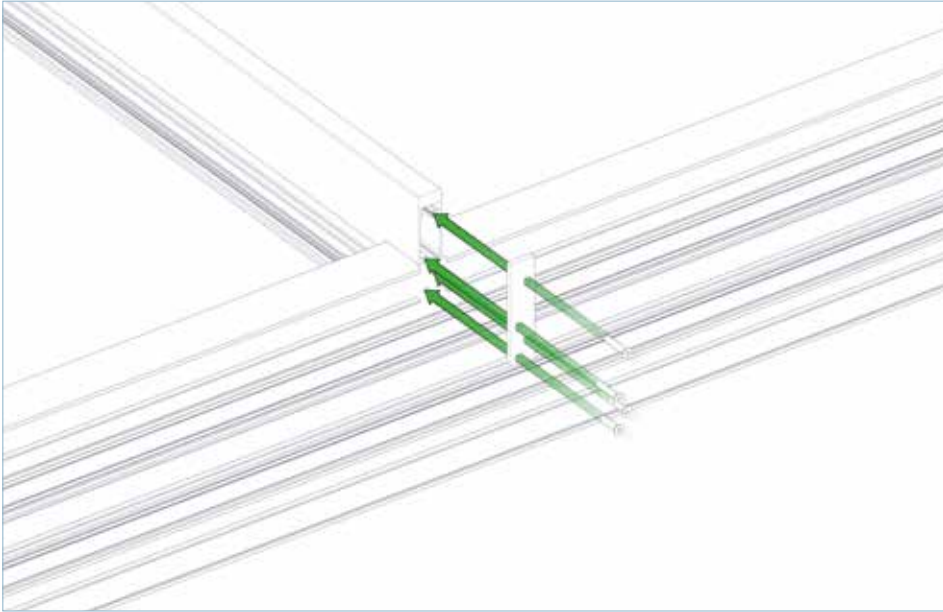
Then unscrew and remove end plate.

FIG 16



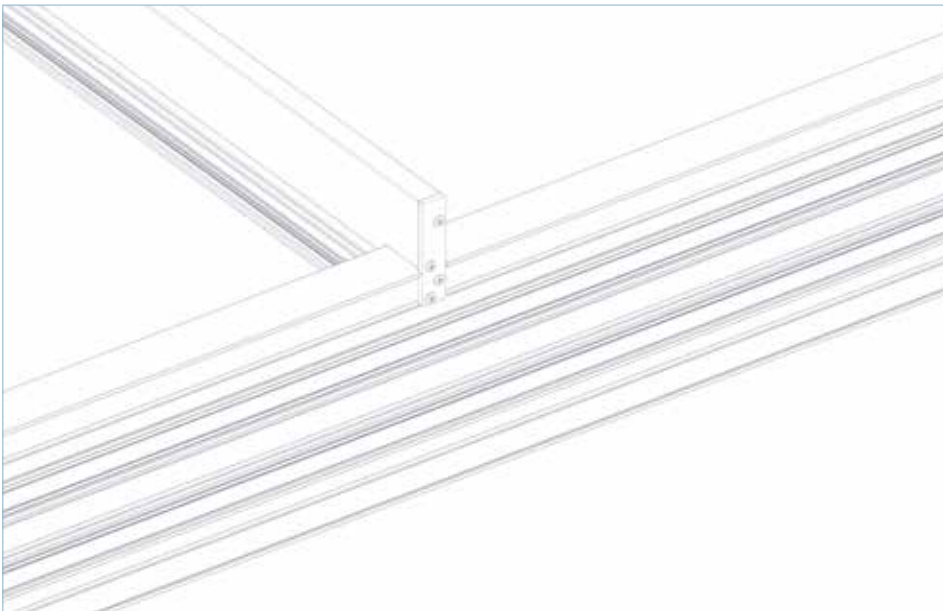
Seal screw holes with suitable sealant.

FIG 17



Fix interlocker end plate.

FIG 18

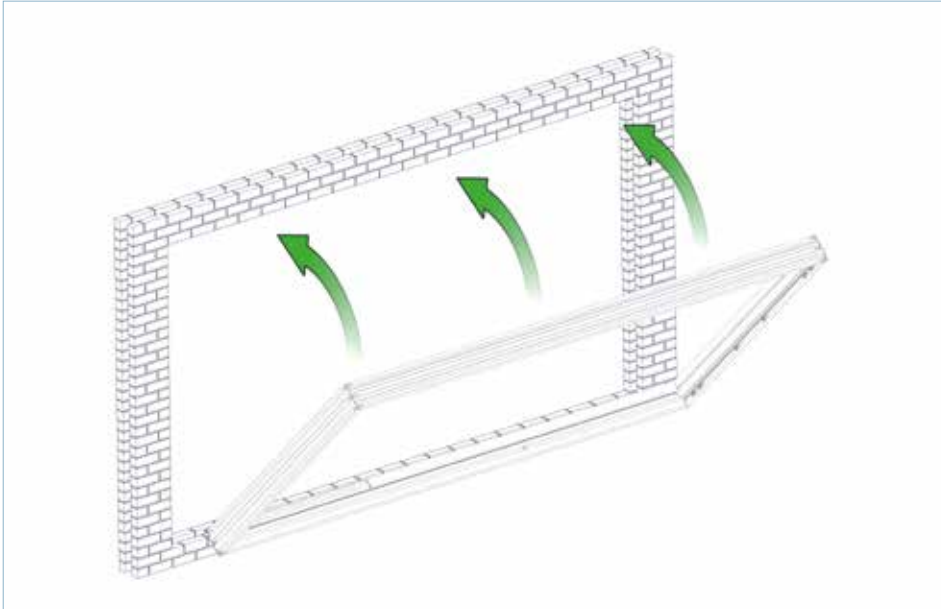


Tighten screws and repeat process for top interlocker end plate.

FIG 19

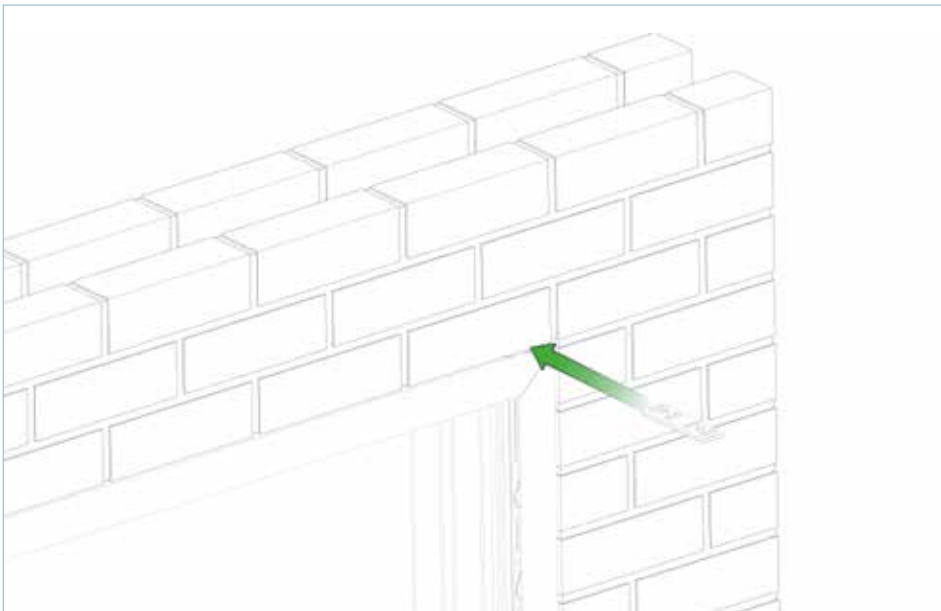


5. Lift the frame in to aperture



Lift frame in to aperture, ensuring drainage caps are situated externally.

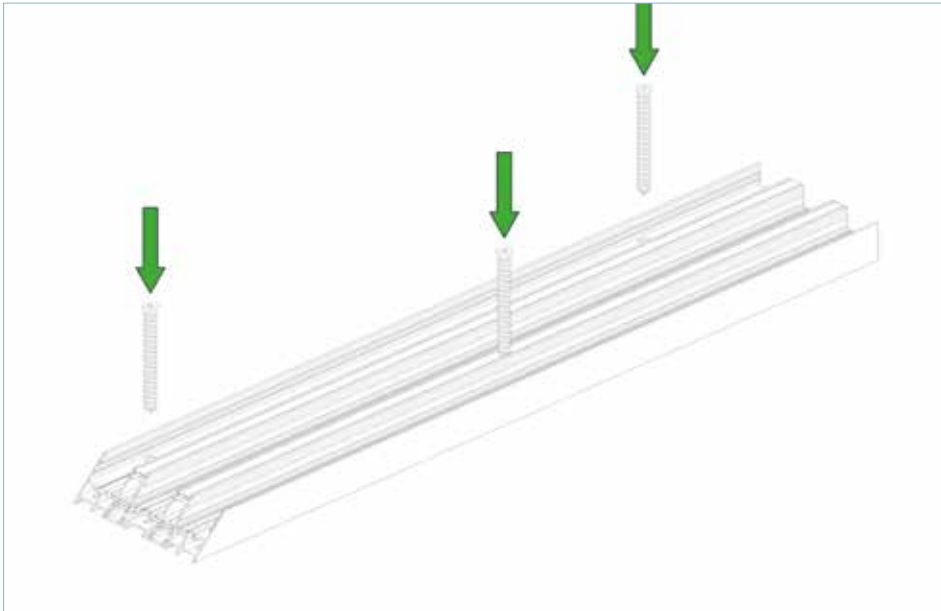
FIG 20



Insert packers above both jambs.

FIG 21

6. Fix the bottom track



Where possible, fixing points should be on both sides of the frame, in a zig-zag pattern.

FIG 22

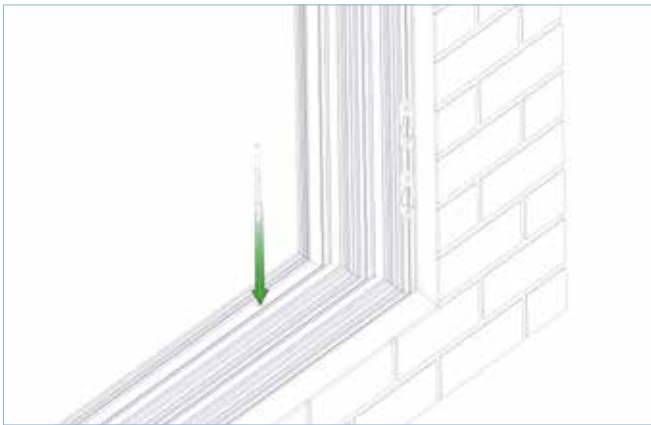


FIG 23

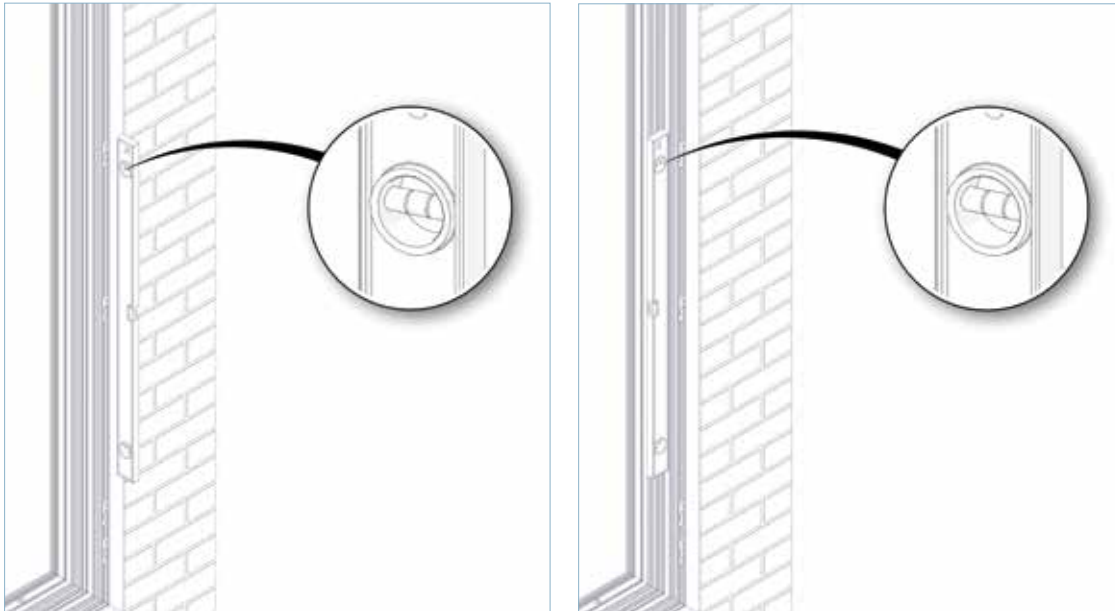
Use an HSS bit to drill and countersink an appropriate sized fixing hole through the frame. This should be no more than 150mm from the external corner of the frame.



FIG 24

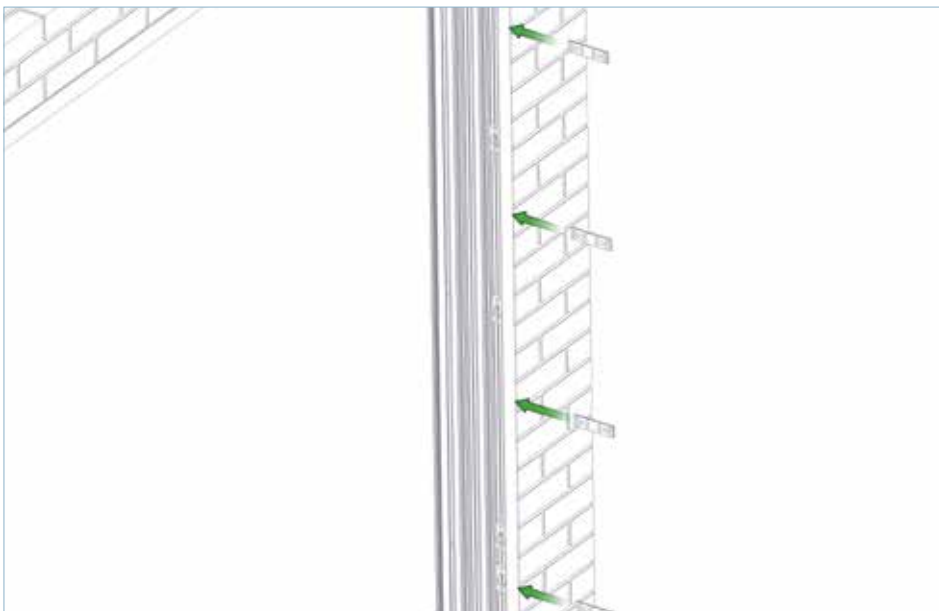
Insert suitable sealant to fixing hole, then screw preferred fixing in place. Repeat process along the bottom track, ensuring fixings are within 900mm intervals.

7. Level and fix both jambs



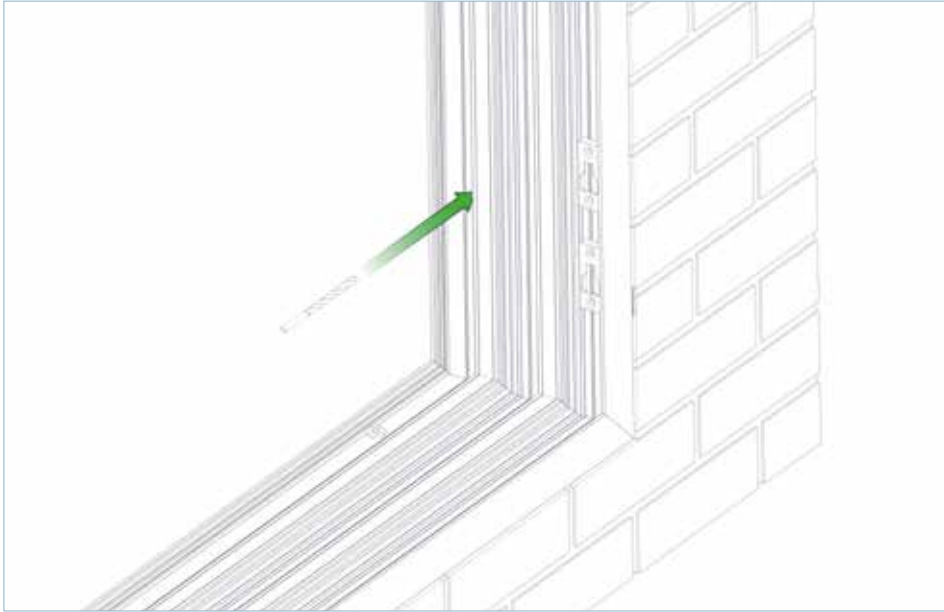
Level out jambs in both directions.

FIG 25



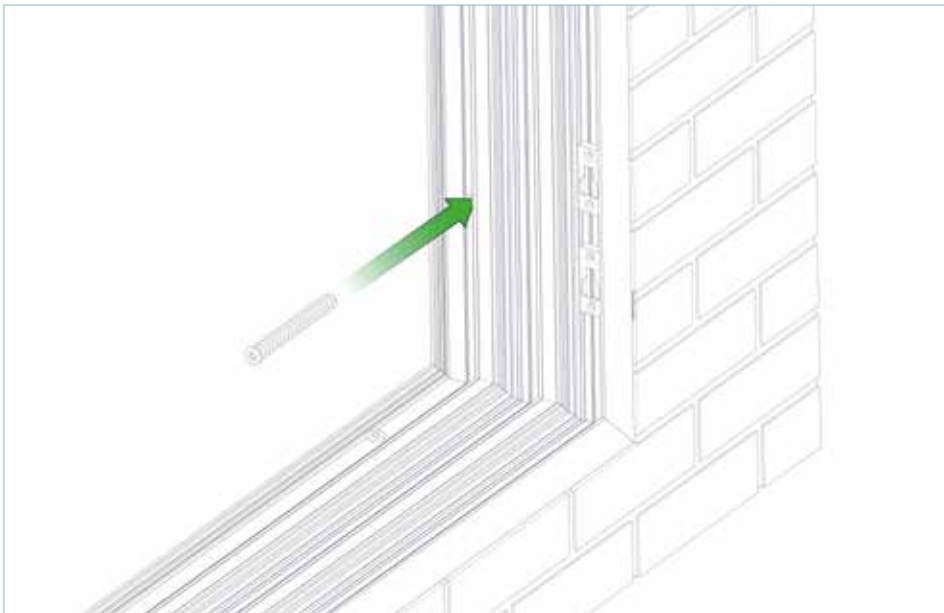
Pack out jambs accordingly when level.

FIG 26



Use an HSS bit to drill and countersink an appropriate sized fixing hole through the frame. This should be no more than 150mm from the external corner of the frame.

FIG 27



Screw preferred fixing in place. Repeat process along the jambs, ensuring fixings are within 600mm intervals.

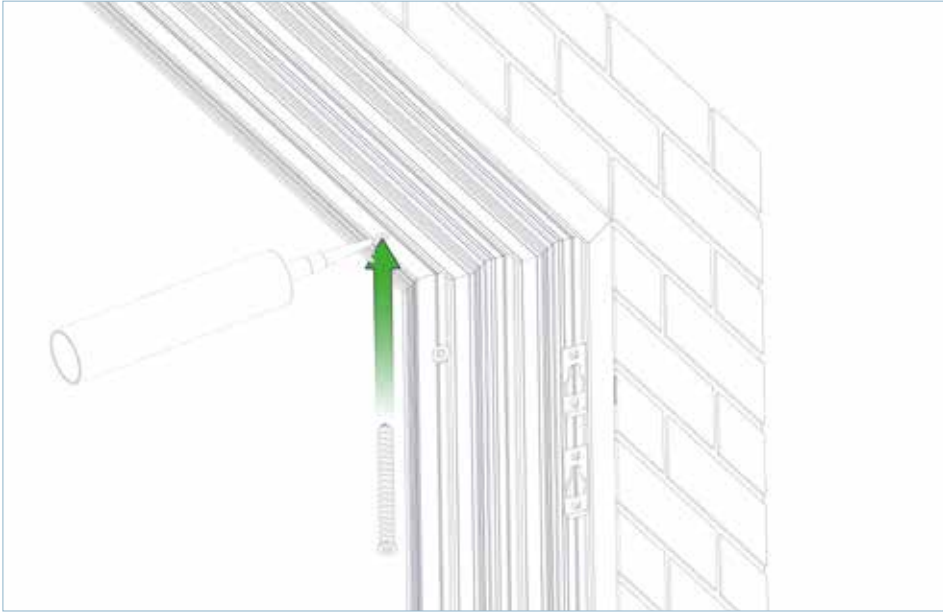
FIG 28

8. Fix the top track



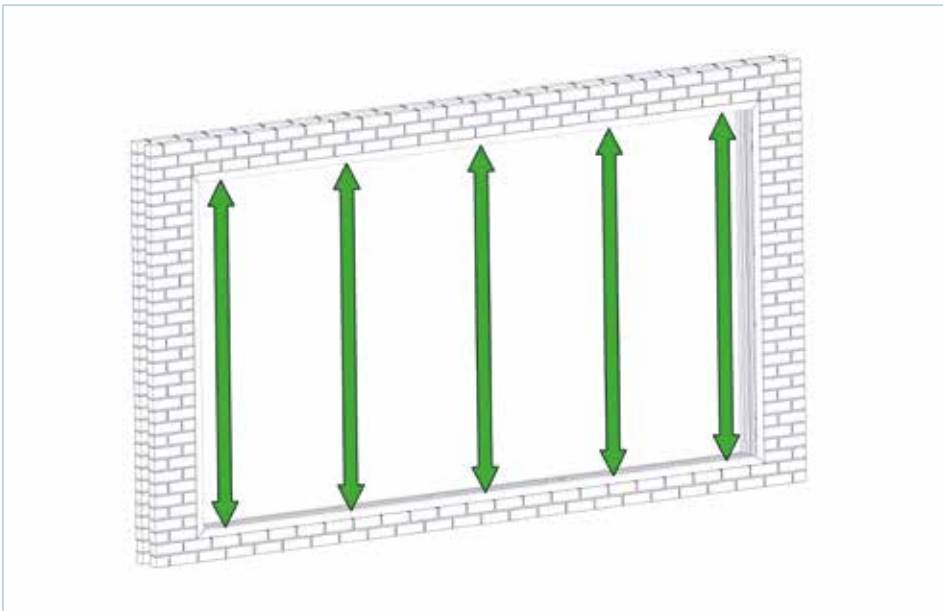
FIG 29

Use an HSS bit to drill and countersink an appropriate sized fixing hole through the frame. This should be no more than 150mm from the external corner of the frame.



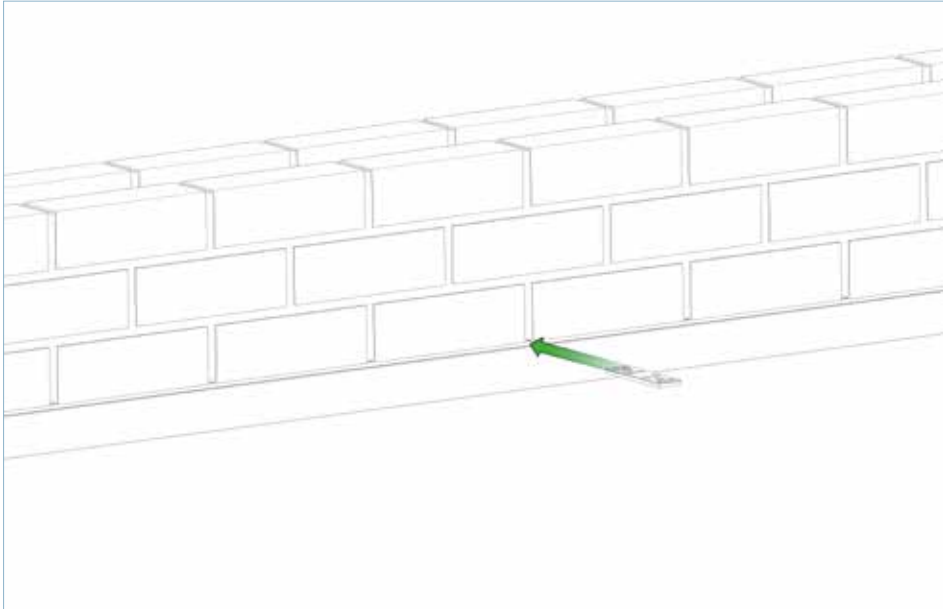
Insert suitable sealant to fixing hole, then screw preferred fixing in place. This must be done at both ends of the top track.

FIG 30



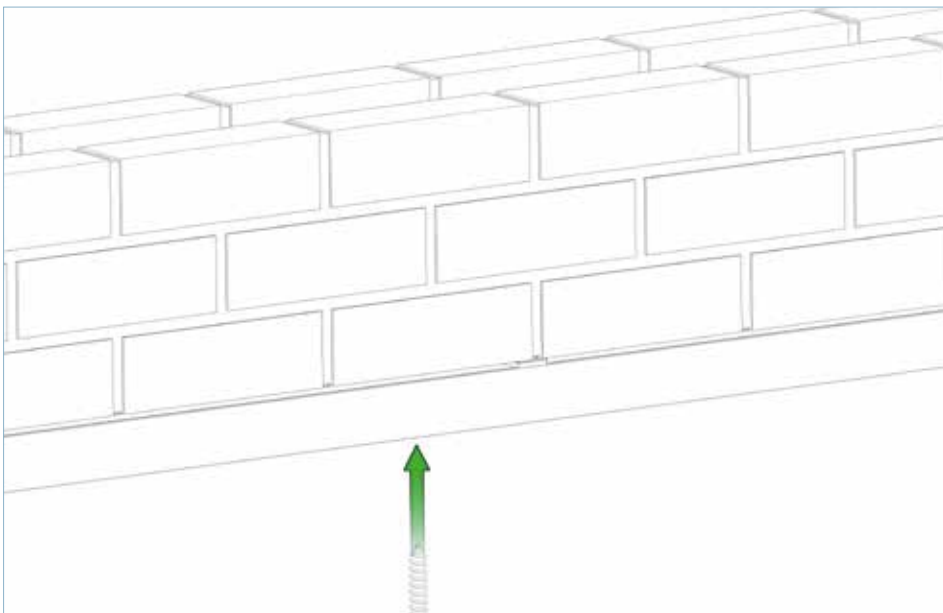
Accurately measure the internal frame dimensions.

FIG 31



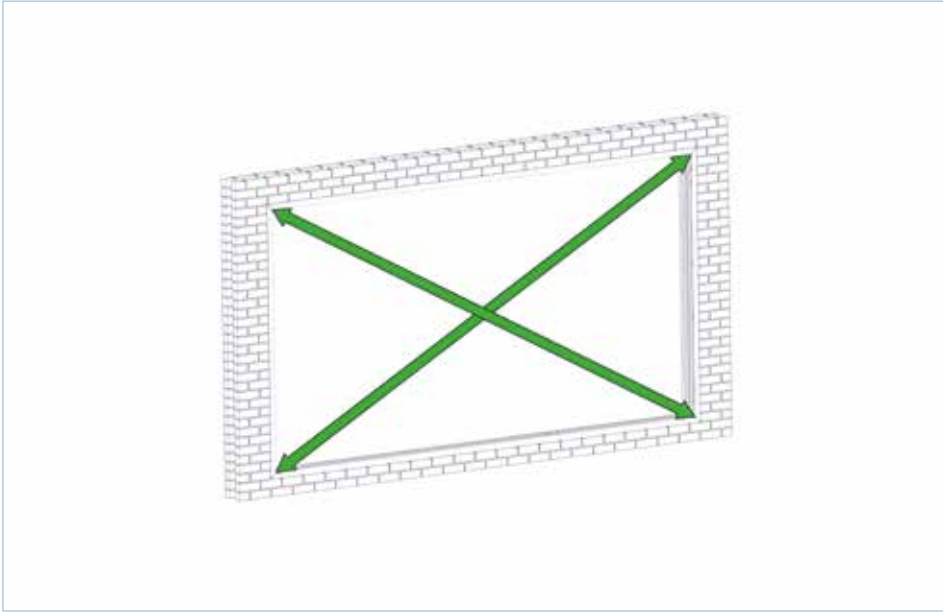
Pack out across the top track for consistent internal frame sizes. Ensure the track doesn't bow in any direction.

FIG 32



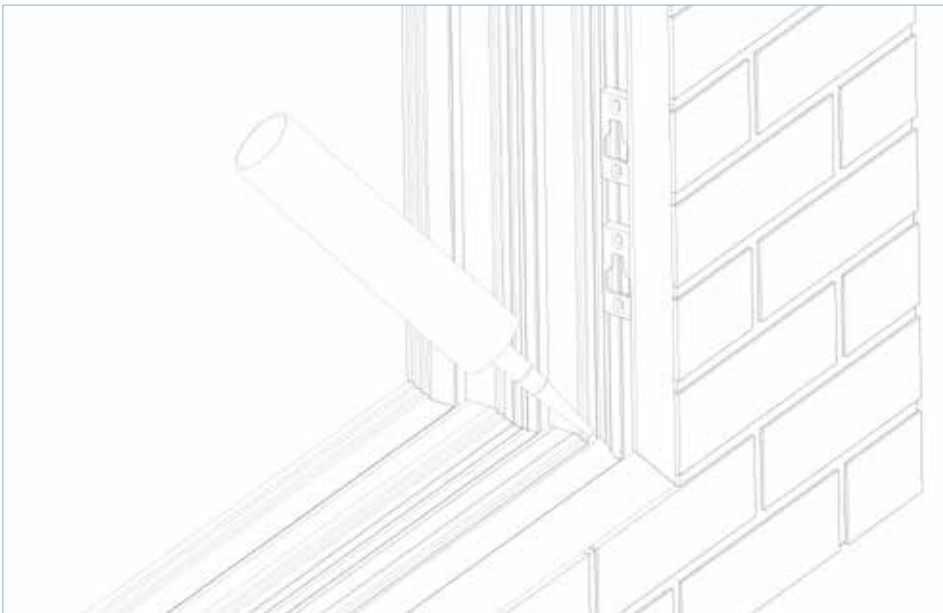
Use an HSS bit to drill and countersink an appropriate sized fixing hole through the frame. Insert sealant to fixing hole, then screw preferred fixing in place. Repeat process along the top track, ensuring fixings are within 900mm intervals.

FIG 33



Measure diagonally from corner to corner to check the frame is square.

FIG 34

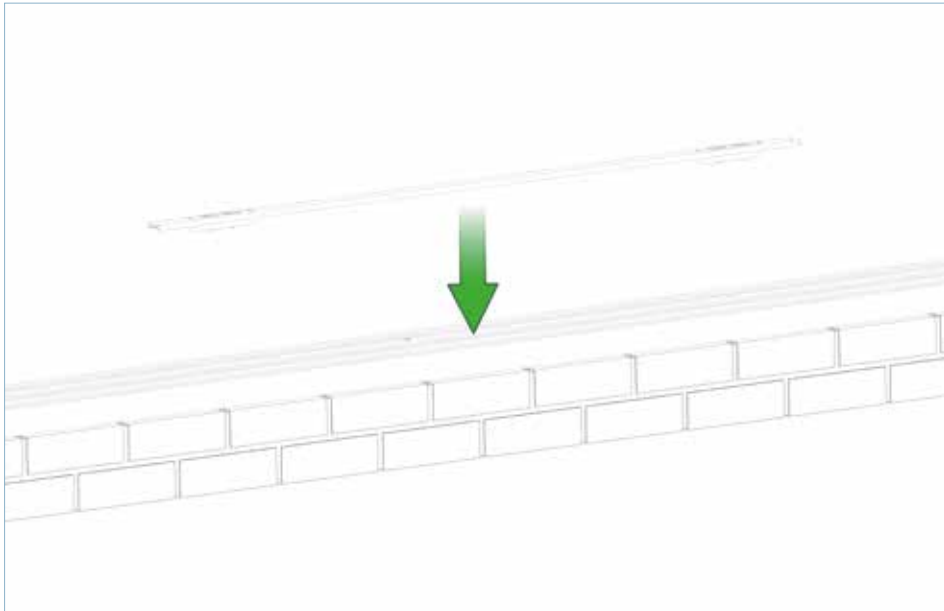


Seal the drainage isolator in place, ensuring ends of profile are sealed with edge of frame.

FIG 35

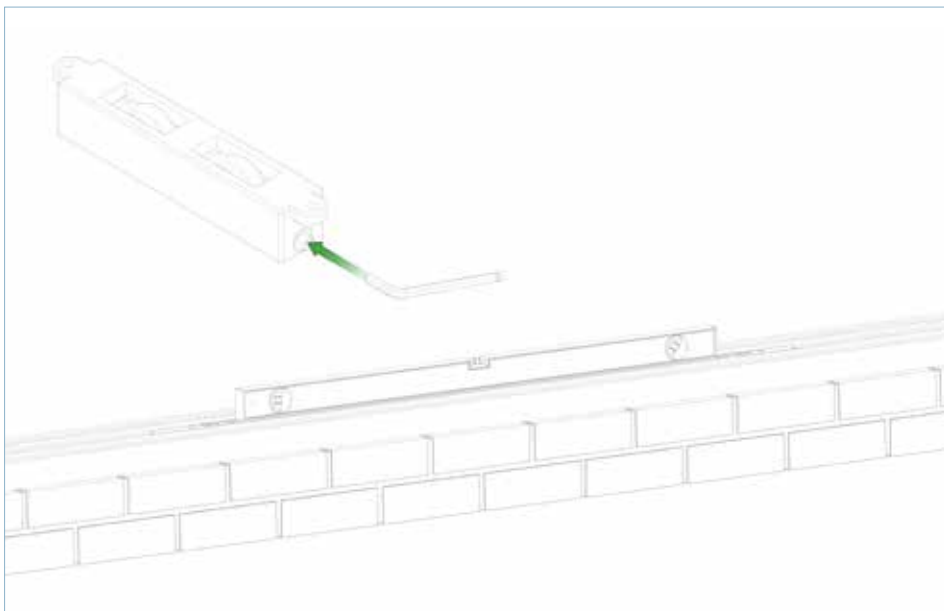
9. Install the sash

Install sashes, working from inside to outside.



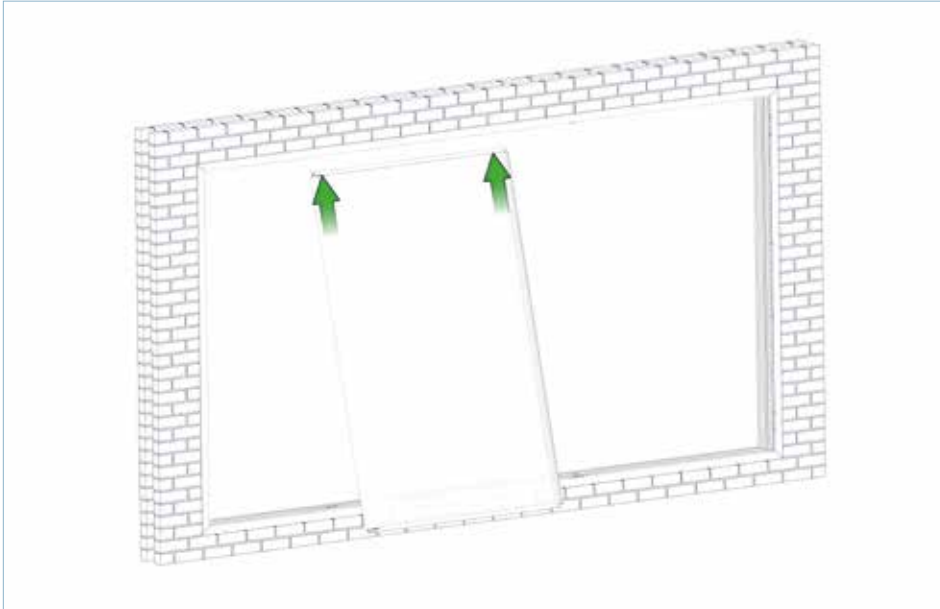
Insert all running gear profiles in to necessary track channels.

FIG 36



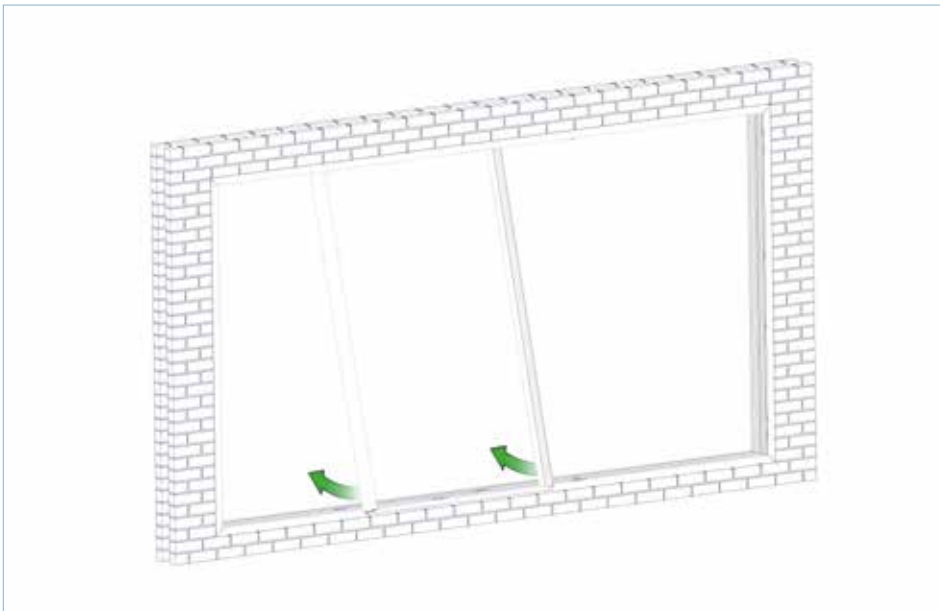
Level the running gear profiles by adjusting the roller height with a 3mm Allen Key.

FIG 37



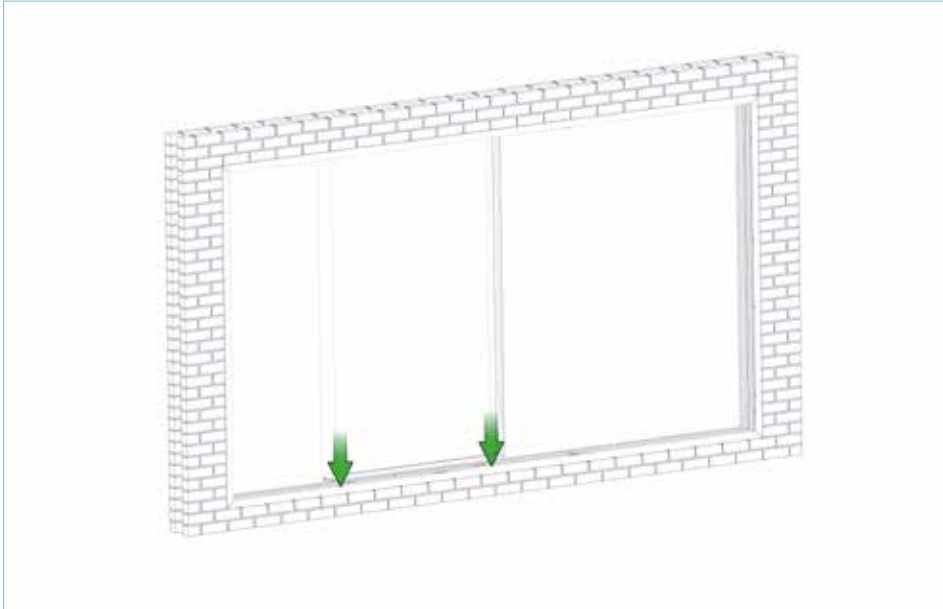
Insert top of sash in to top track channel.

FIG 38



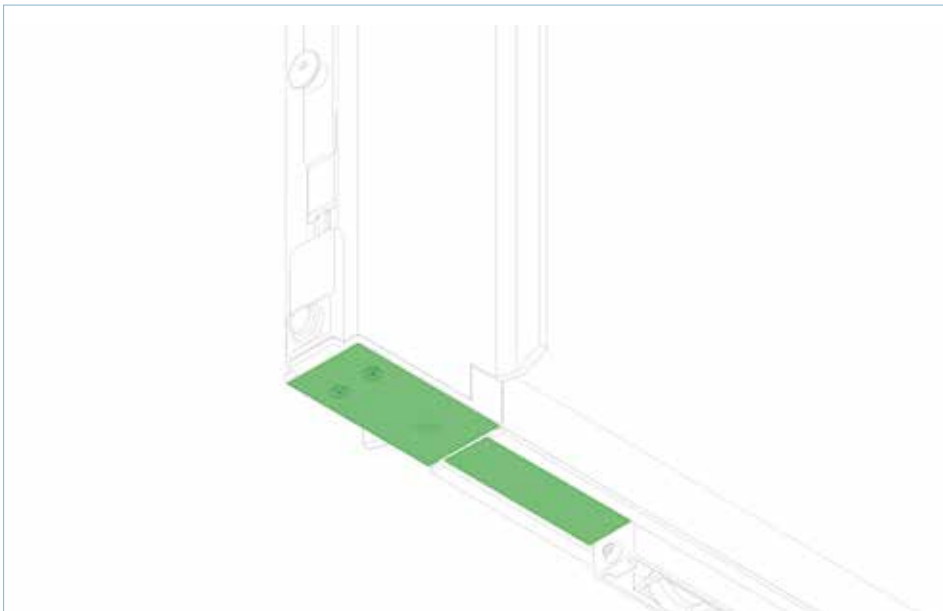
Swing bottom of sash above running gear.

FIG 39



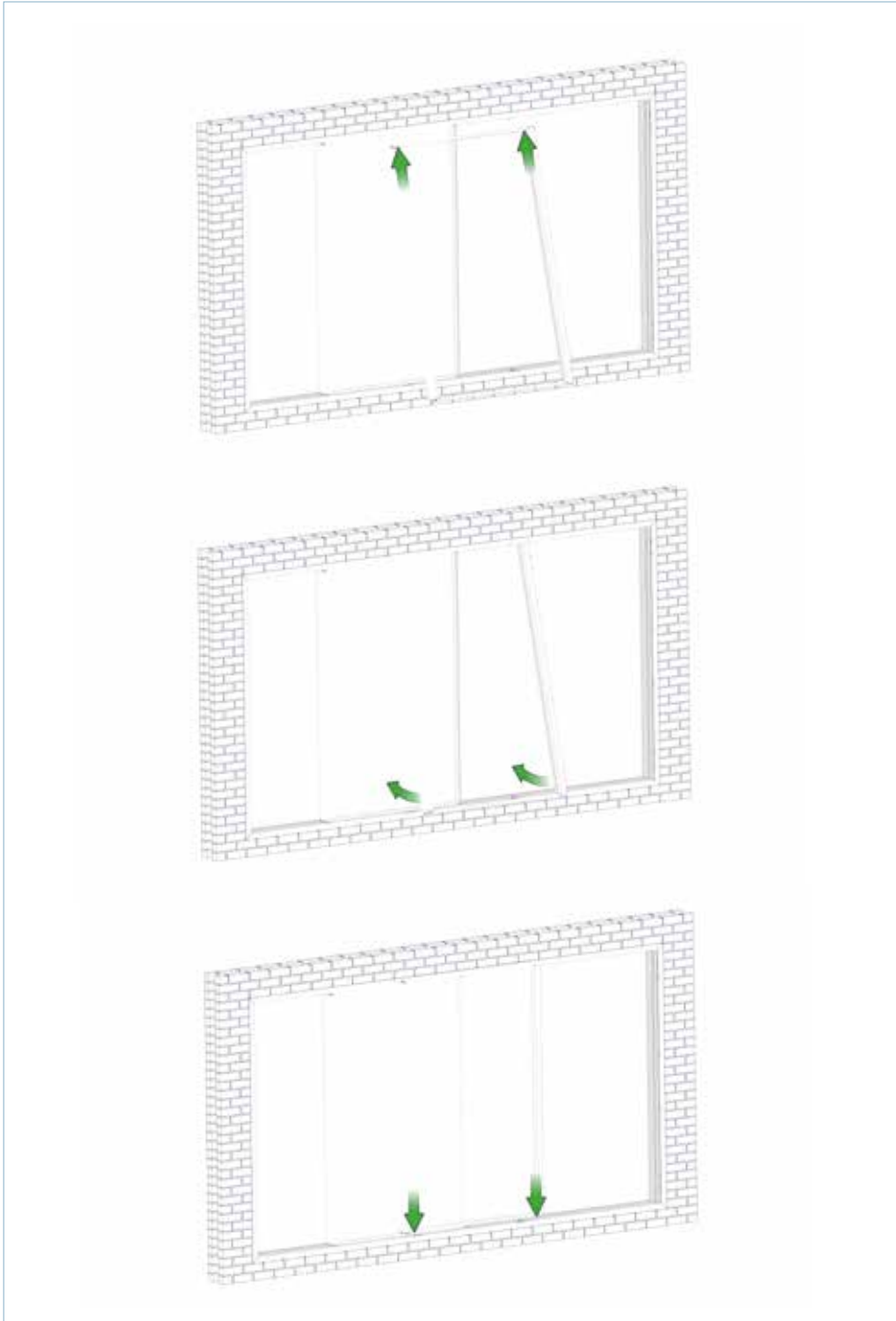
Drop sash on to running gear, ensuring the running gear sits within the bottom of the sash.

FIG 40



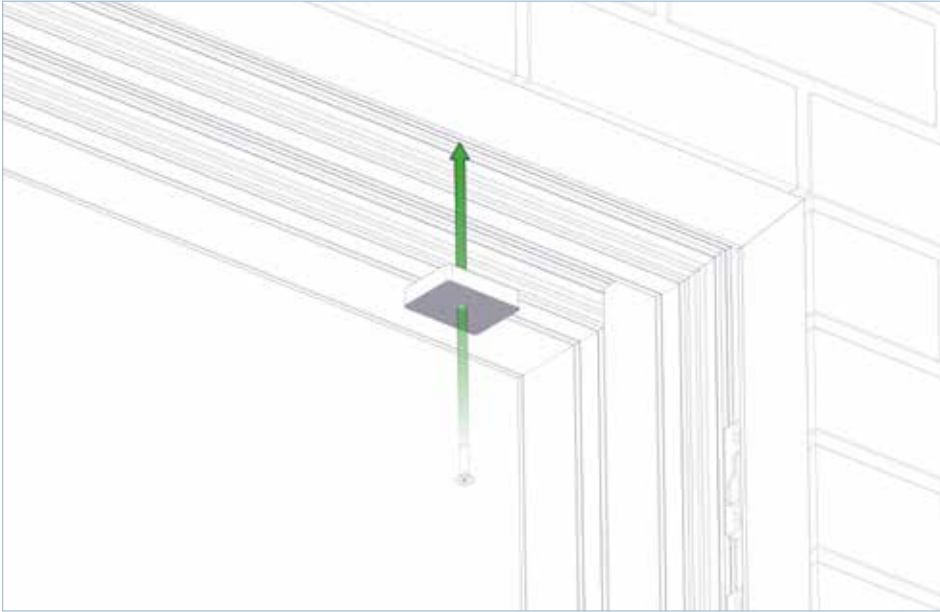
Check to ensure bottom of sash and running gear components are flush at both ends.

FIG 41



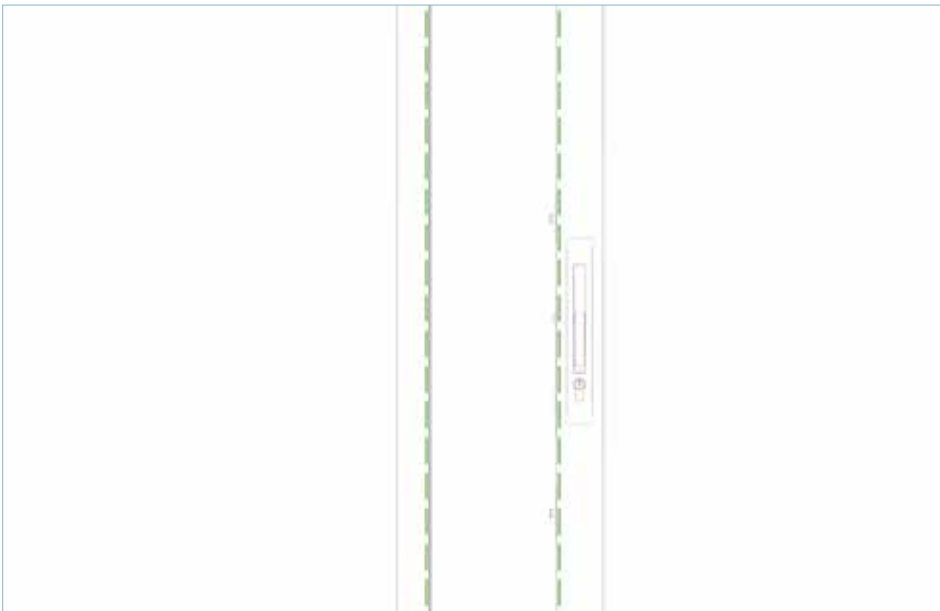
If applicable, repeat process for remaining sashes.

FIG 42



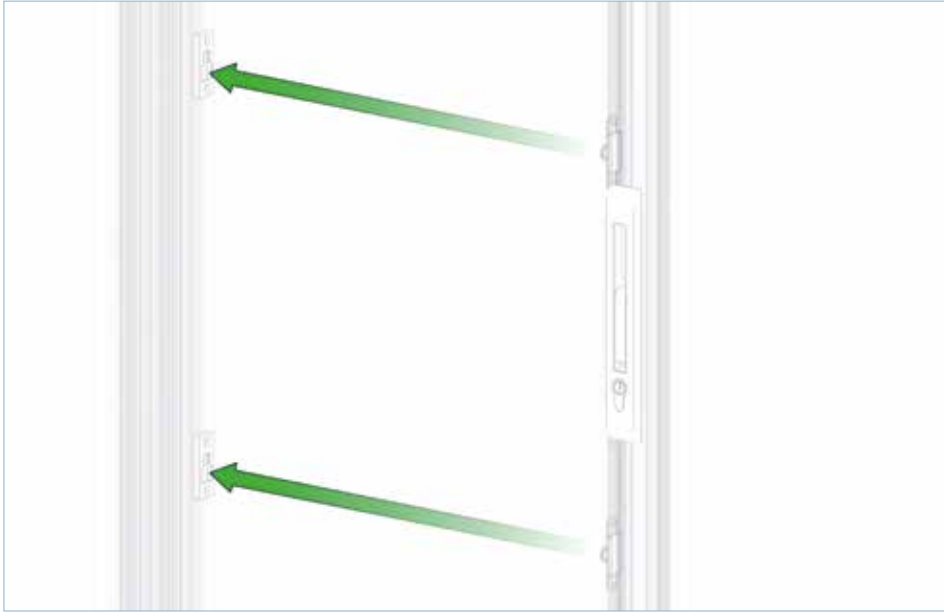
Fix anti-lift blocks above each sash corner when the sash is in the closed position. Fix using 3.9 x 25mm screws and position no more than 60mm from the external corner of the sash.

FIG 43



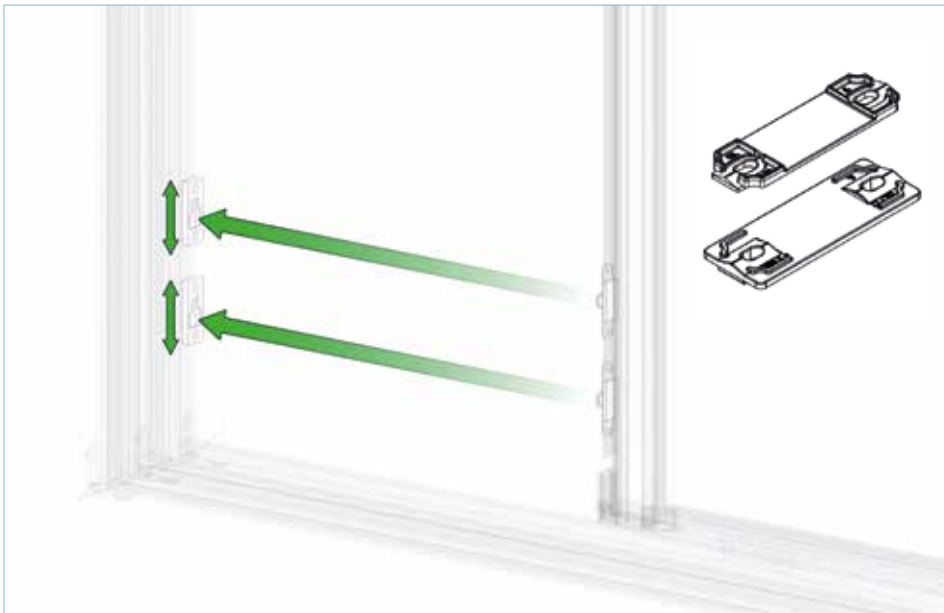
Level the lockstile to ensure the sash is parallel to the frame. Repeat for all opening sashes to ensure the interlockers line up correctly.

FIG 44



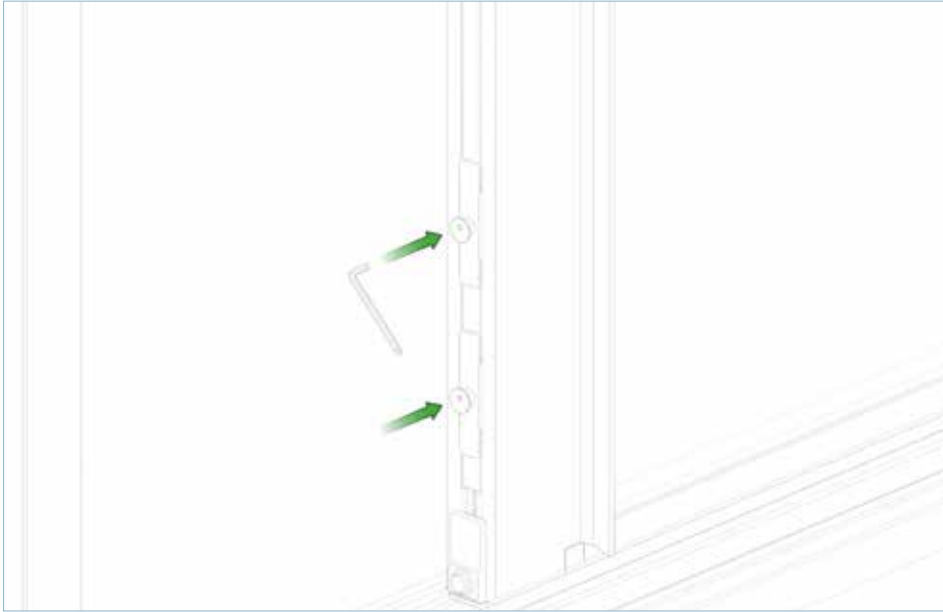
Align centre keeps with corresponding locking points. (Situated directly above and below handle).

FIG 45



Working from bottom to top, adjust keep positions if necessary. Keeps can be packed out using the 0.5 and 2mm packers supplied. Adjust keeps until the handle engages correctly, and the key in the lock cylinder turns smoothly.

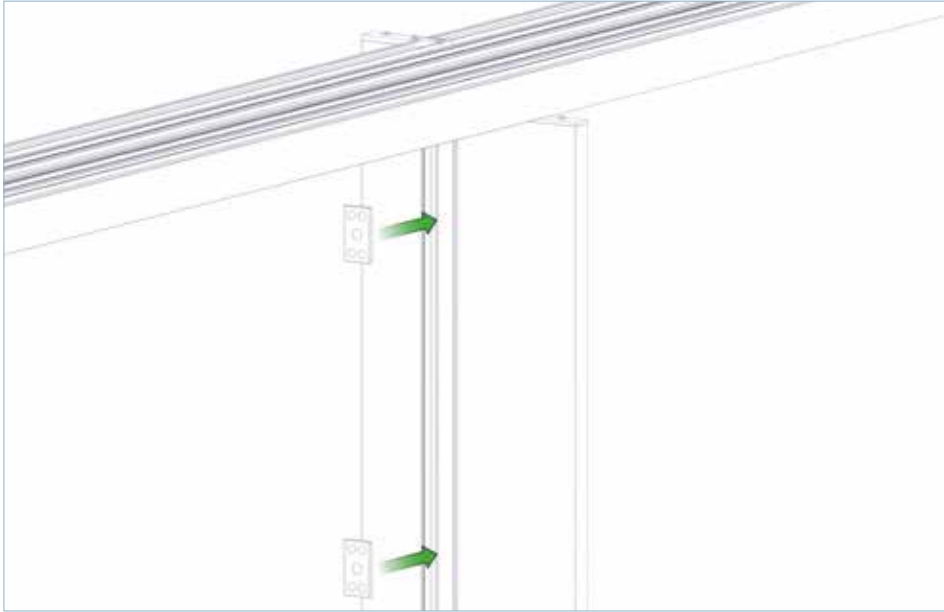
FIG 46



If more adjustment is required, use a 3mm Allen Key to adjust the locking point.

FIG 47

10. If applicable, install the fixed panel



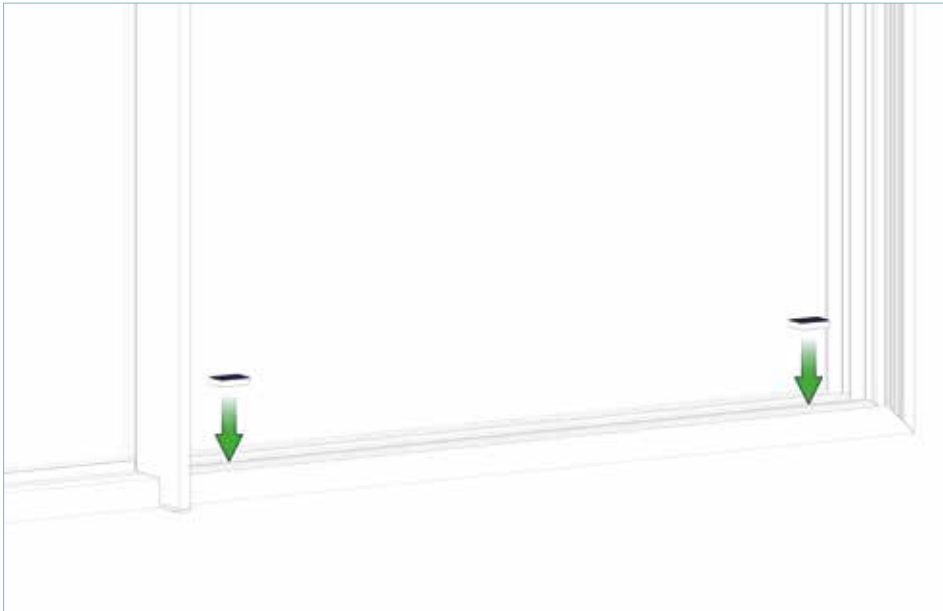
Pack out as appropriate.

FIG 48



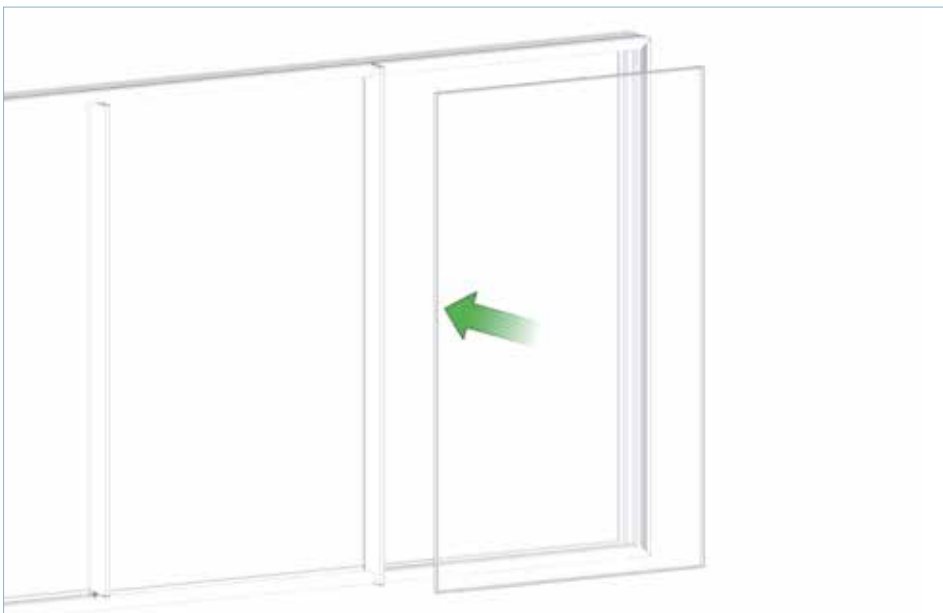
Apply supplied structural sealant around each packer.

FIG 49



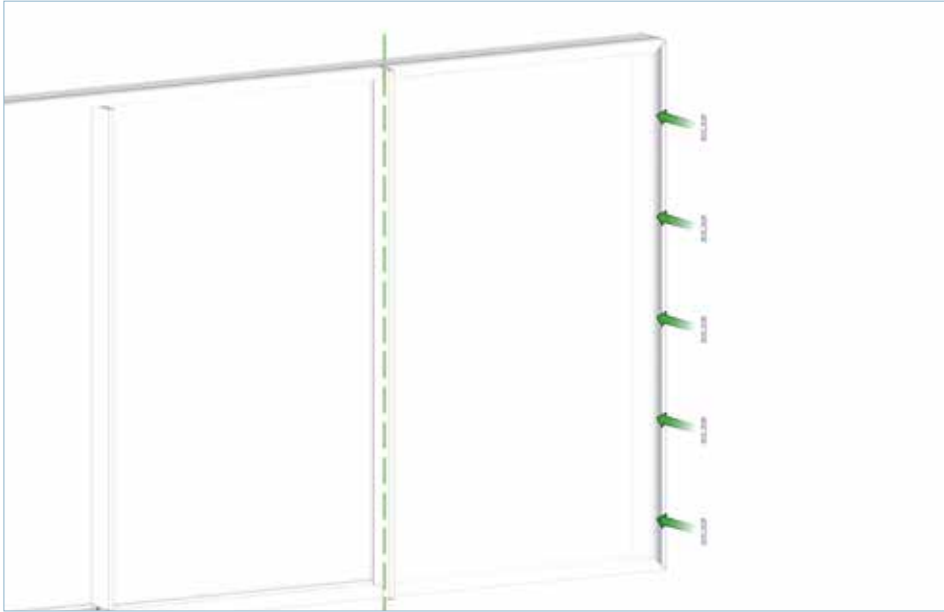
Place 10mm anti-lift packers in to track channel.

FIG 50



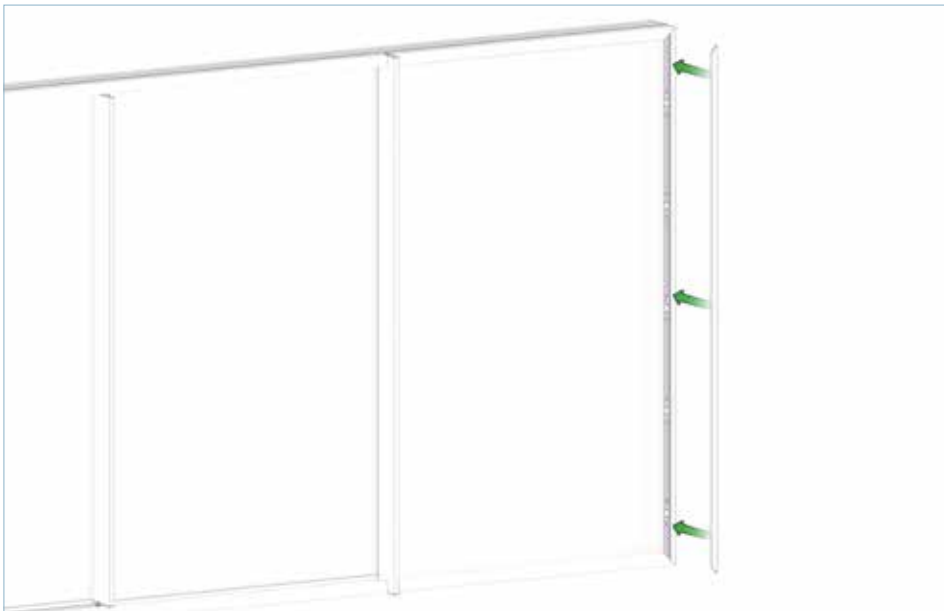
Insert glass into frame and slide over on to pre-applied structural sealant in interlocker. Pack out below glass so is central in the frame.

FIG 51



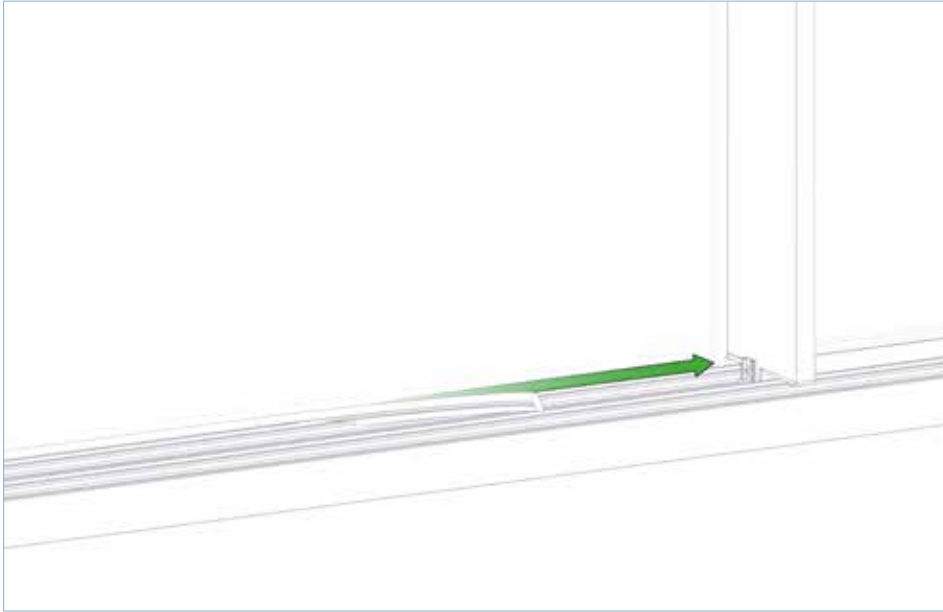
Use a straight edge or long level along the fixed interlocker to ensure straightness. Pack out accordingly between edge of glass and jamb.

FIG 52



Secure frame bead in place. First clip top and bottom of bead, then proceed to clip in the centre.

FIG 53



Fit wedge gasket between glass and outer frame, on both inside and outside glass faces.

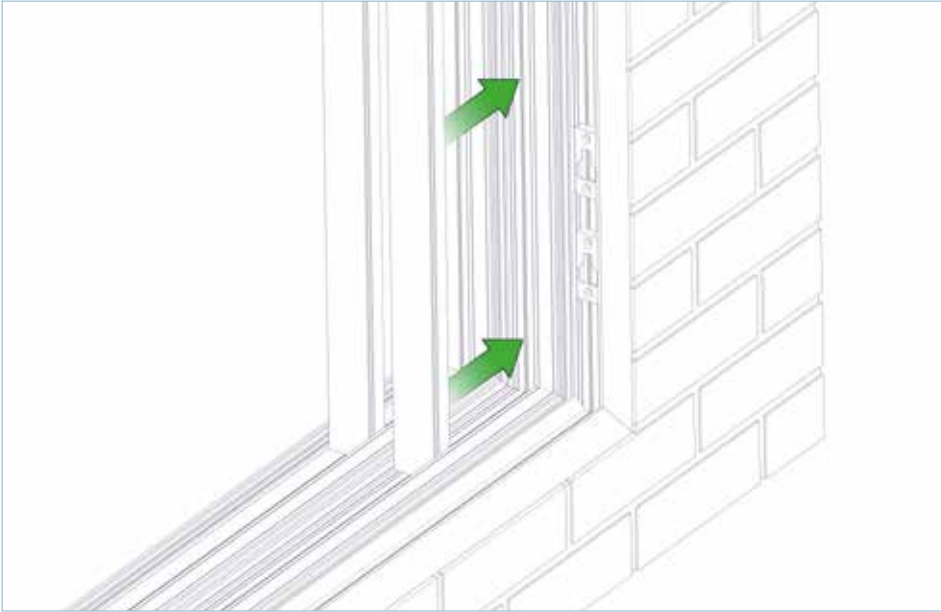
FIG 54



Apply bead of structural sealant along the length of interlocker (both inside and outside faces). Leave to fully cure before operating the set.

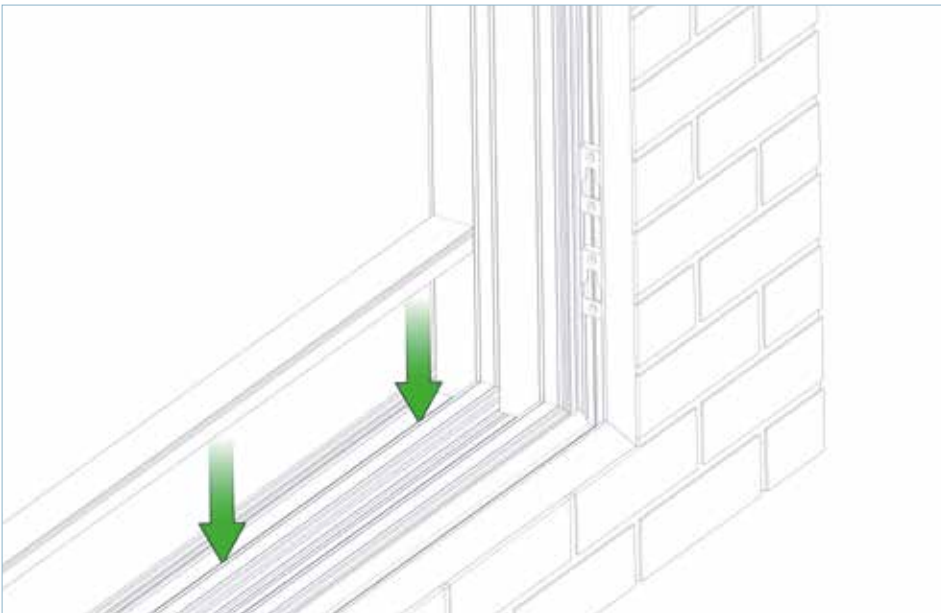
FIG 55

11. Install frame covers



Clip in the vertical frame cover pieces.

FIG 56



Clip in the horizontal frame cover pieces.

FIG 57

Contact

Accounts

t 08448 802 371 or 01494 416 895 **e** Finance@origin-global.com

Marketing

t 08448 802 374 or 01494 416 897 **e** Marketing@origin-global.com

Sales Operations

t 0808 168 5816 or 01494 686 868 **e** OrdersNorth@origin-global.com

e OrdersSouth@origin-global.com

Solutions

t 08448 802 373 or 01494 416 896 **e** Solutions@origin-global.com

Fleet and Logistics

t 08448 802 378 or 01494 416 898 **e** Logistics@origin-global.com



Origin Global HQ, Stuart House,
Castle Estate, Coronation Road,
Cressex Business Park, High Wycombe,
Buckinghamshire, HP12 3TA

t 0808 168 5816
e enquiry@origin-global.com
w www.origin-global.com

Origin Northern Centre of Excellence,
Taurus Park, Europa Boulevard,
Westbrook, Warrington,
Cheshire, WA5 7ZT

t 01925 907 907
e enquiry@origin-global.com
w www.origin-global.com